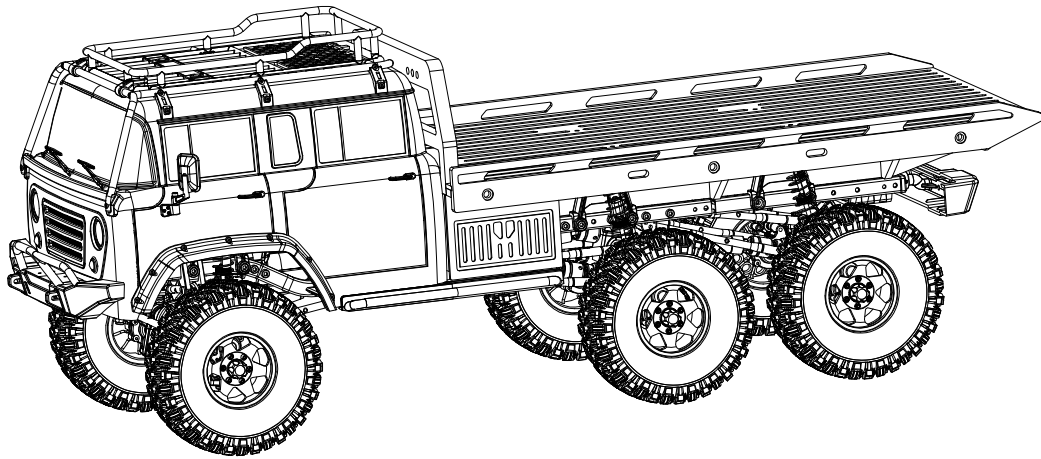


*JT6(RTR)*



***CROSSRC***

## CAUTION



To prevent serious personal injury and/or property damage, operate all remotely controlled models in a responsible manner as outlined herein.

### ◆ Safety Precautions

- 1.1 This radio-controlled model is not a toy, it is designed for persons 14 years of age or older.
- 1.2 Do not operate your vehicle on unsafe terrain; always pay attention to your surroundings.
- 1.3 Never operate your vehicle on public roadways, around moving people, animals, or operating machinery.
- 1.4 Keep clear of power lines and high-powered radio equipment to minimize radio frequency interference.
- 1.5 Since this vehicle contains small components, it may be a choking hazard for small children. Keep the vehicle and any spare parts out of reach of small children.

### ◆ Inspect your radio-controlled model before operation

- 2.1 Ensure that all screws are properly tightened. Use thread-lock to secure any metal to metal contacts- especially for components designed to withstand torque (servo mounts, motor mount, drive shaft grub screws etc.).
- 2.2 Always check the battery voltage for both the transmitter and vehicle prior to operating your vehicle. Keep the batteries fresh in the transmitter and always begin your vehicle runs with a fully charged battery pack.
- 2.3 Always check that the motor and servo are operating smoothly and in the right direction prior to operation. If binding between components is observed, replace parts as necessary to reduce possibility of component or servo damage.
- 2.4 To turn on your vehicle, always power on your transmitter first, then power on your receiver.

### ◆ After operating your radio-controlled model

- 3.1 To turn off the vehicle, always power off your receiver prior to powering off your transmitter.
- 3.2 Use caution when handling the vehicle- components, especially the ESC and motor which will be hot after operation.
- 3.3 Never use battery packs which are dented or otherwise damaged. Ensure that the wire insulation is intact and that connectors are properly soldered. Lithium batteries can become fire hazards if mishandled.

**1** JT6(RTR)

15012  
 $\phi 5 \times \phi 10 \times 4$  X1

12304  
 M4 X1

14201  
 $\phi 4.2 \times \phi 8 \times 0.4 \times 4$

41549  
 15012  
 33801  
 71229  
 74015  
 215101  
 71229  
 14201  
 12304

**Limited slip adjust**  
 (1) Tighten to the right.  
 (2) "0.5" or "0.75" turns to the left.

2S Li-Po: 0.75 | 3S Li-Po: 0.5

**2** JT6(RTR)

11401  
 M3x4 X1

11207  
 M3x10 X3

11215  
 M3x28 X2

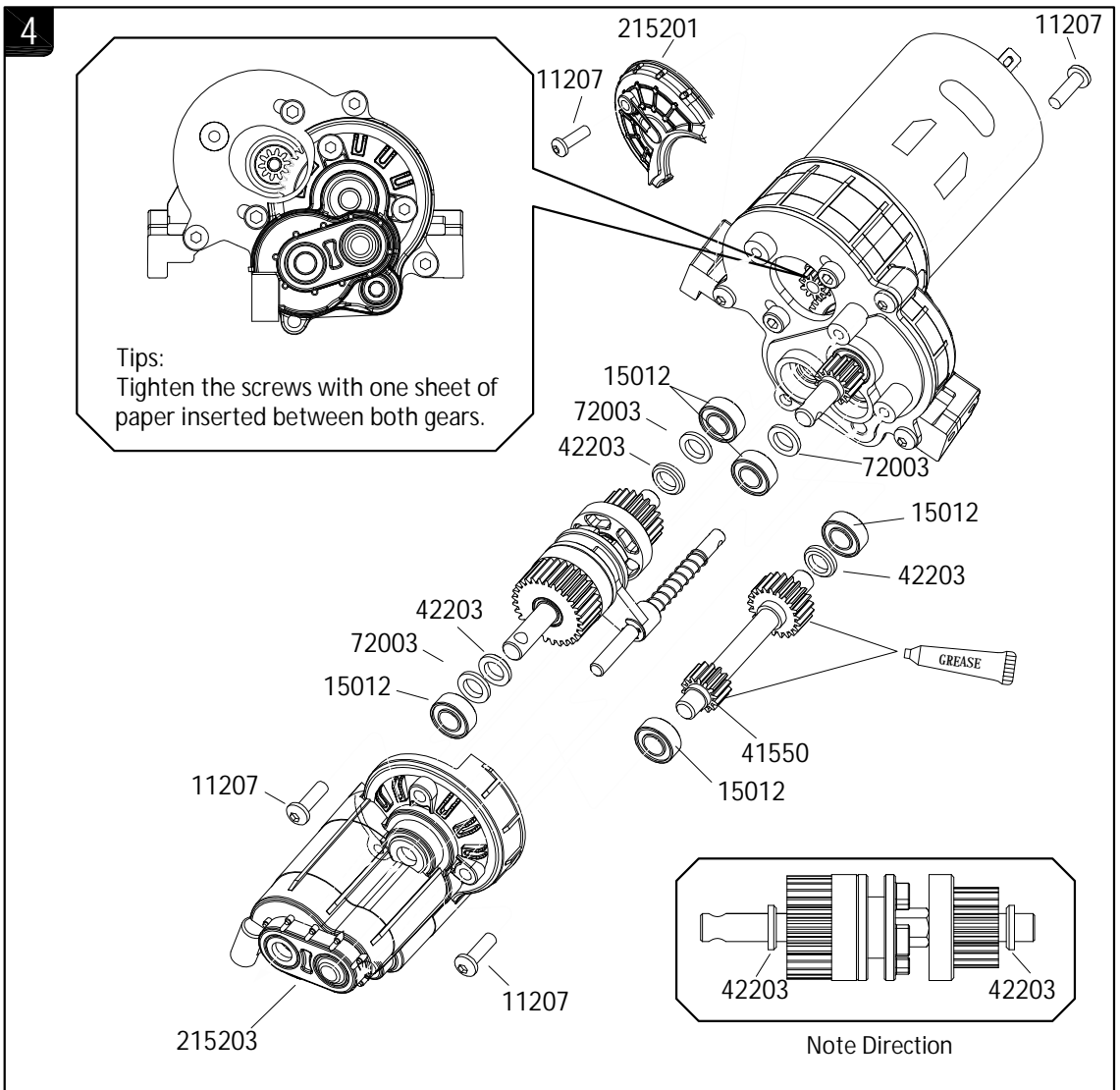
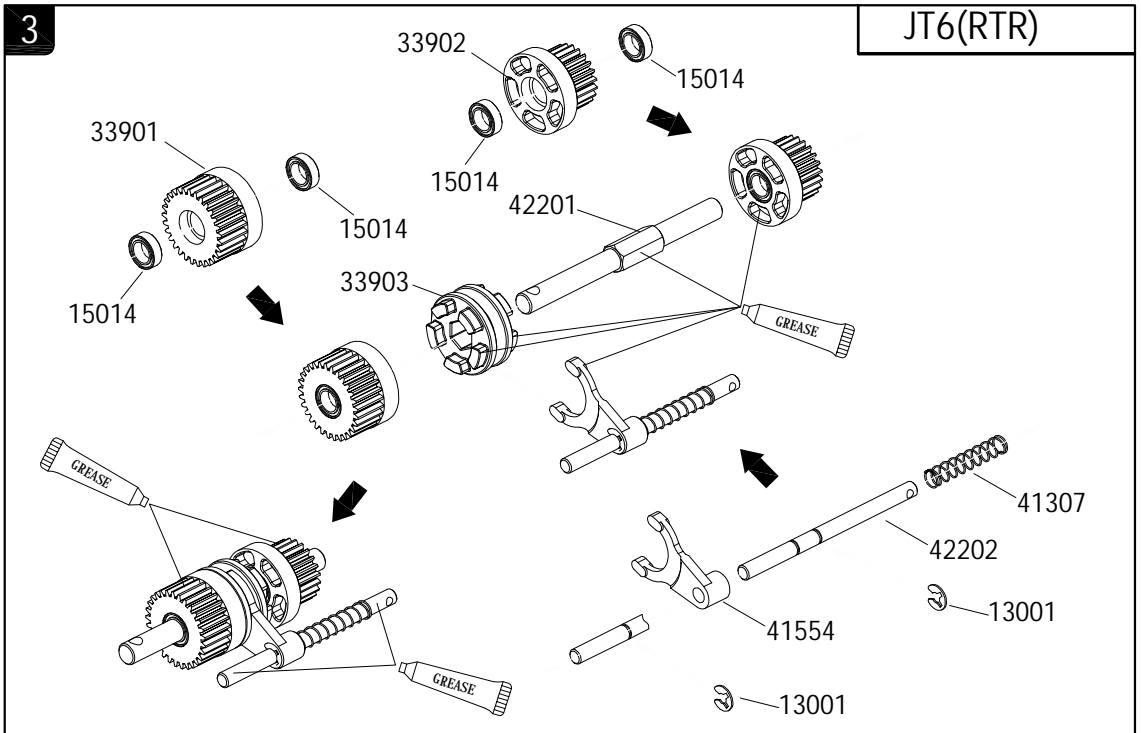
14102  
 $\phi 3 \times \phi 7 \times 0.5$  X2

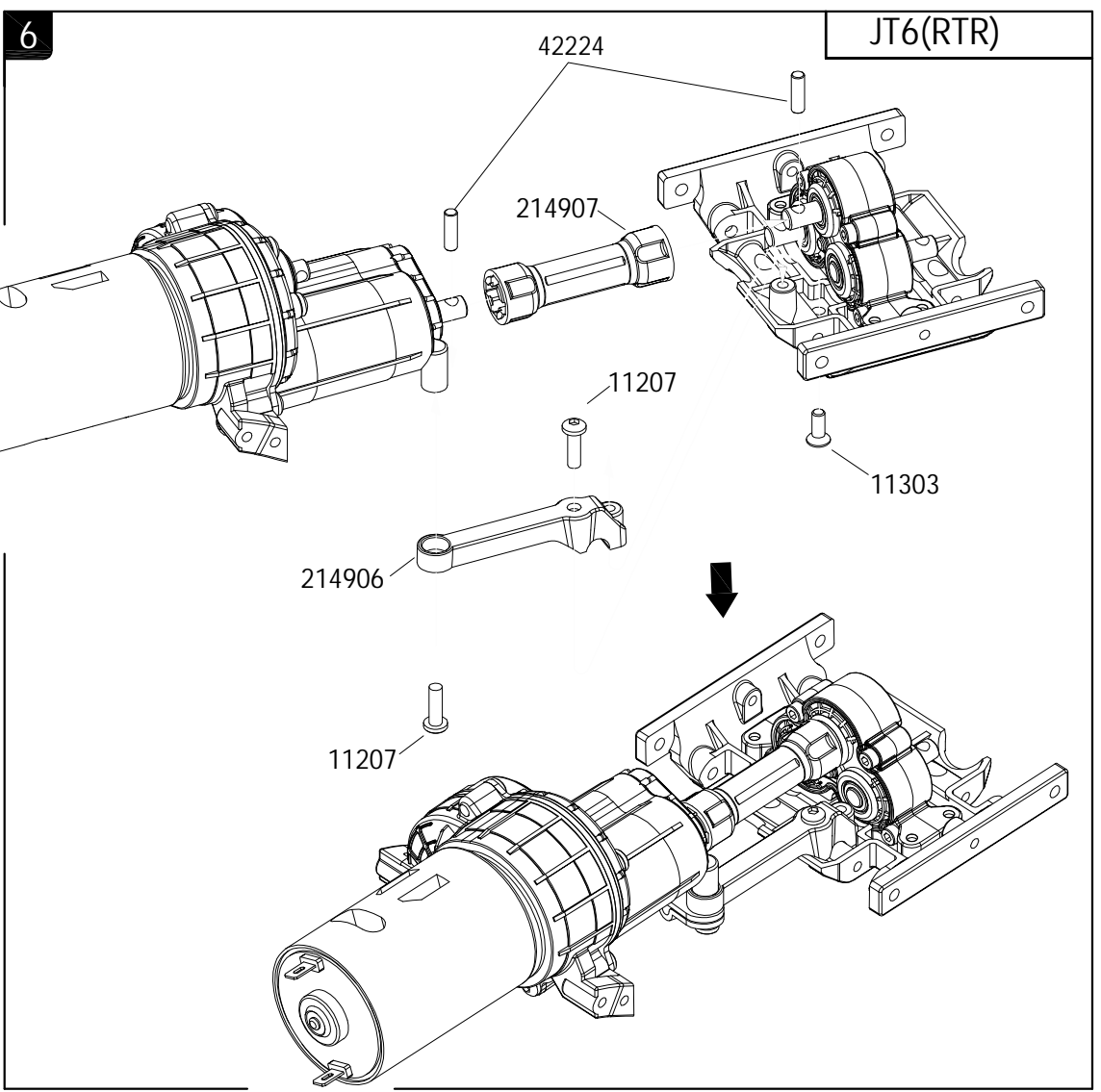
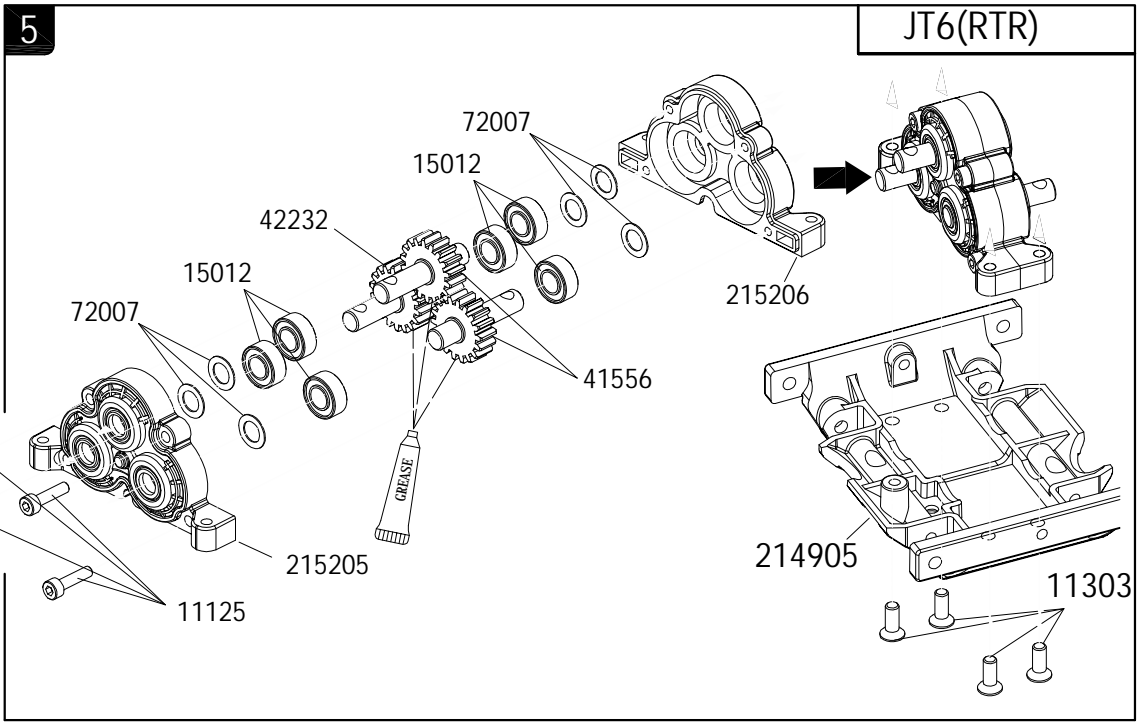
11401  
 215204  
 215202  
 14102  
 11215  
 14102  
 11207

Recommended motor	
Brushed motor	30T-35T
Brushless motor	1400kv

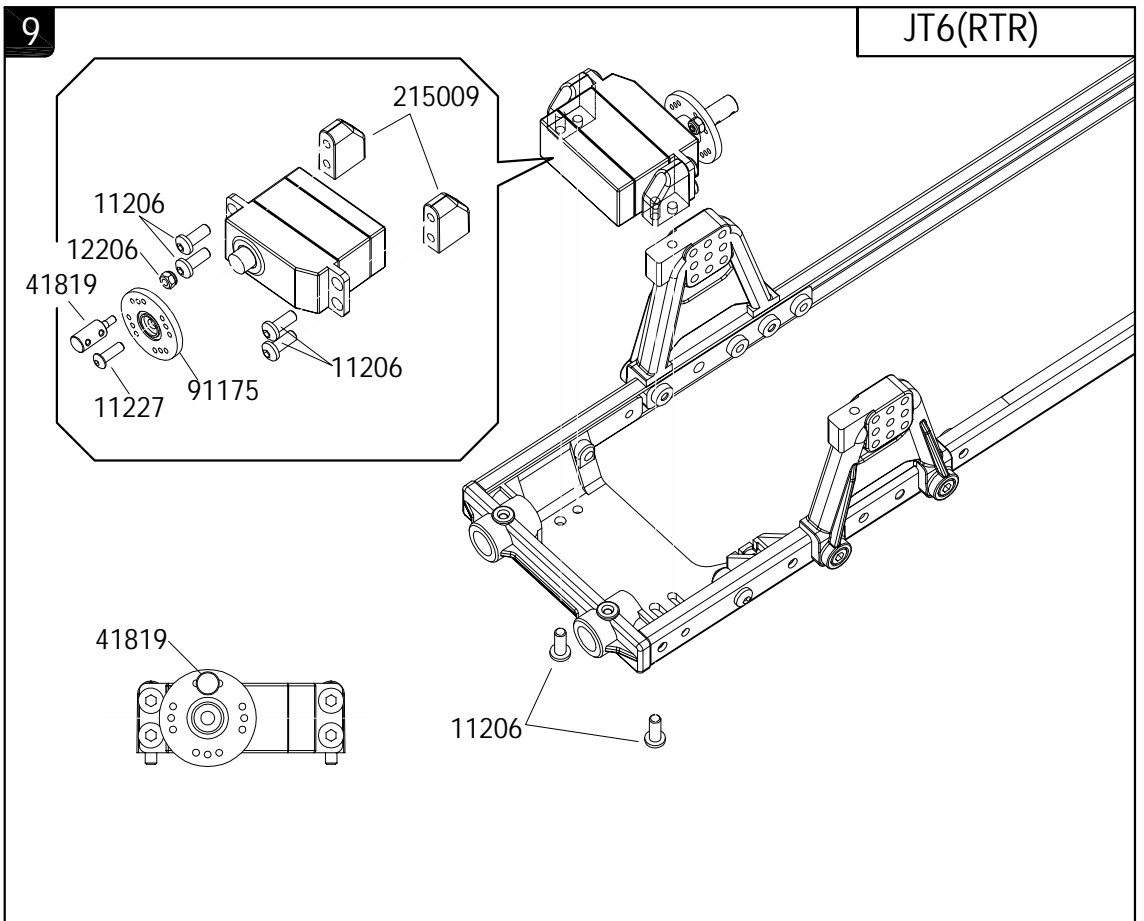
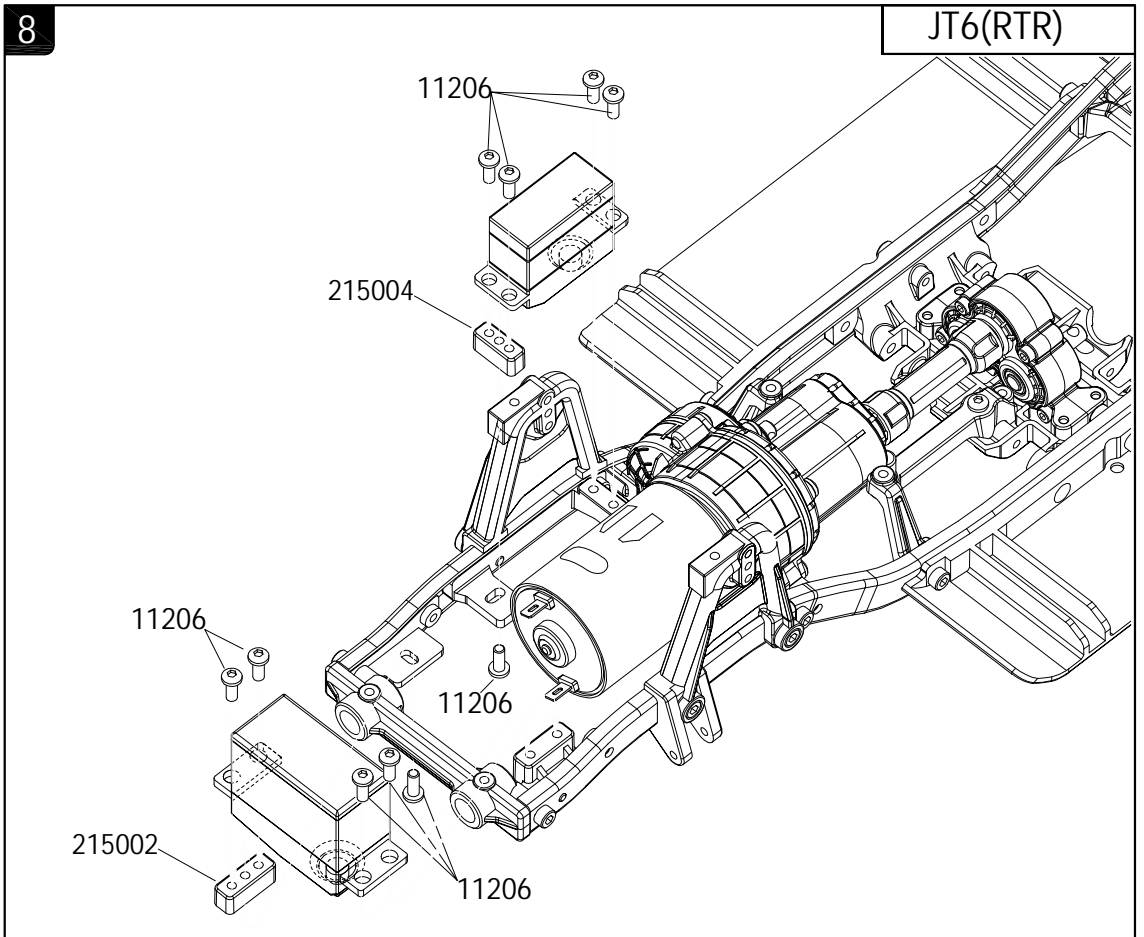
**Final reduction ratio**

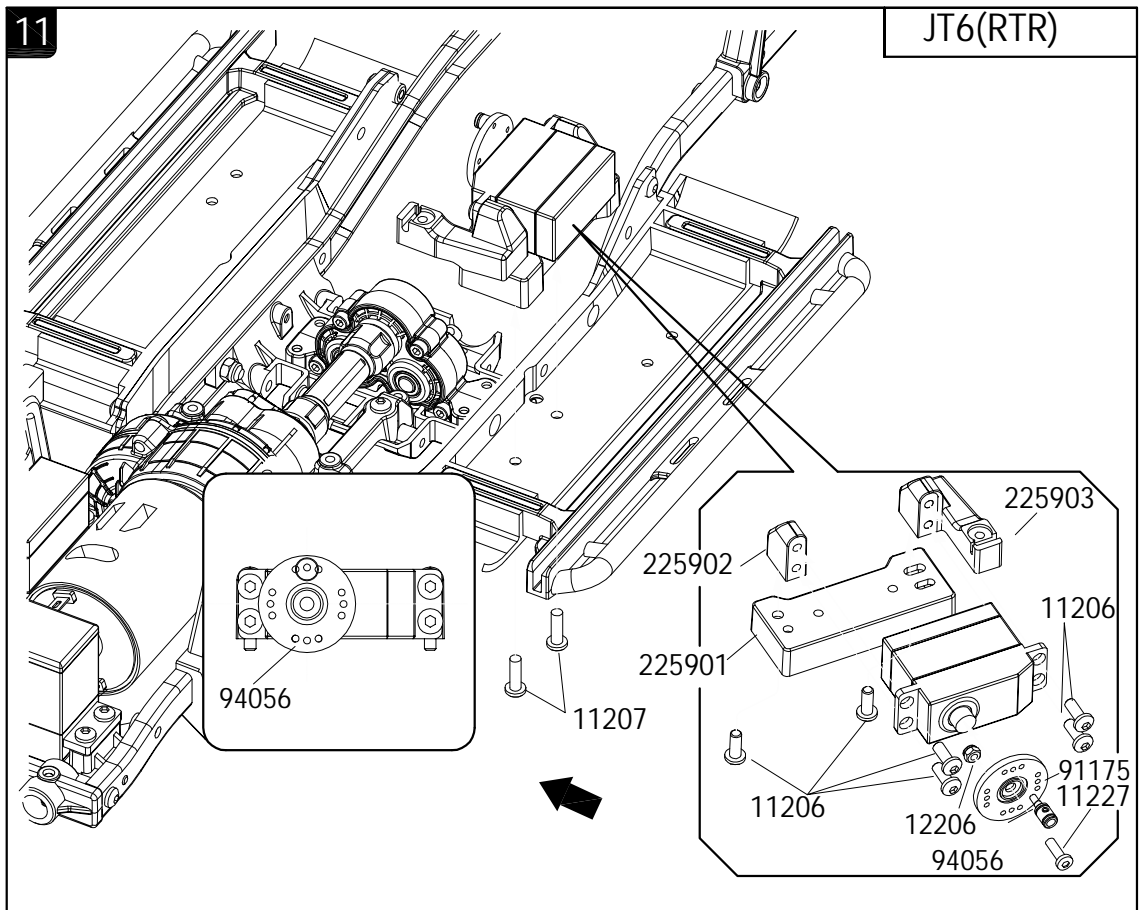
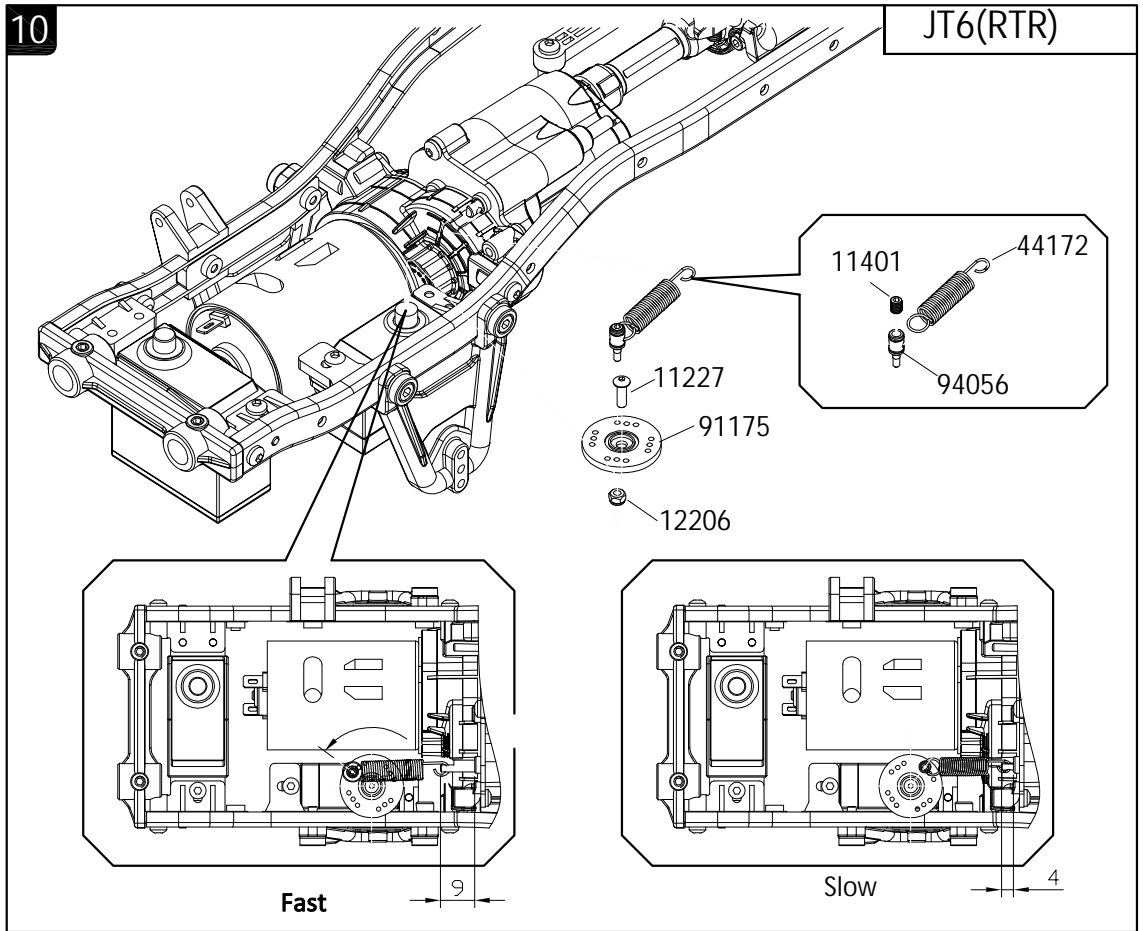
Motor gear	10T	11T	12T	13T	14T	15T	16T	17T	18T
Fast	30.2	27.5	25.2	23.2	21.6	20.1	18.9	17.8	16.8
Slow	59.7	54.3	49.8	45.9	42.6	39.8	37.3	35.1	33.2














12

JT6(RTR)

13004  |  
 ø2.0xø5.5x0.4 X12

ø6.5xø2.5xø2



17007 X18

ø7xø5xø1



17008 X6



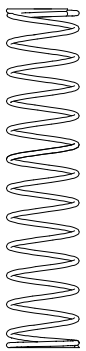
41336 X6



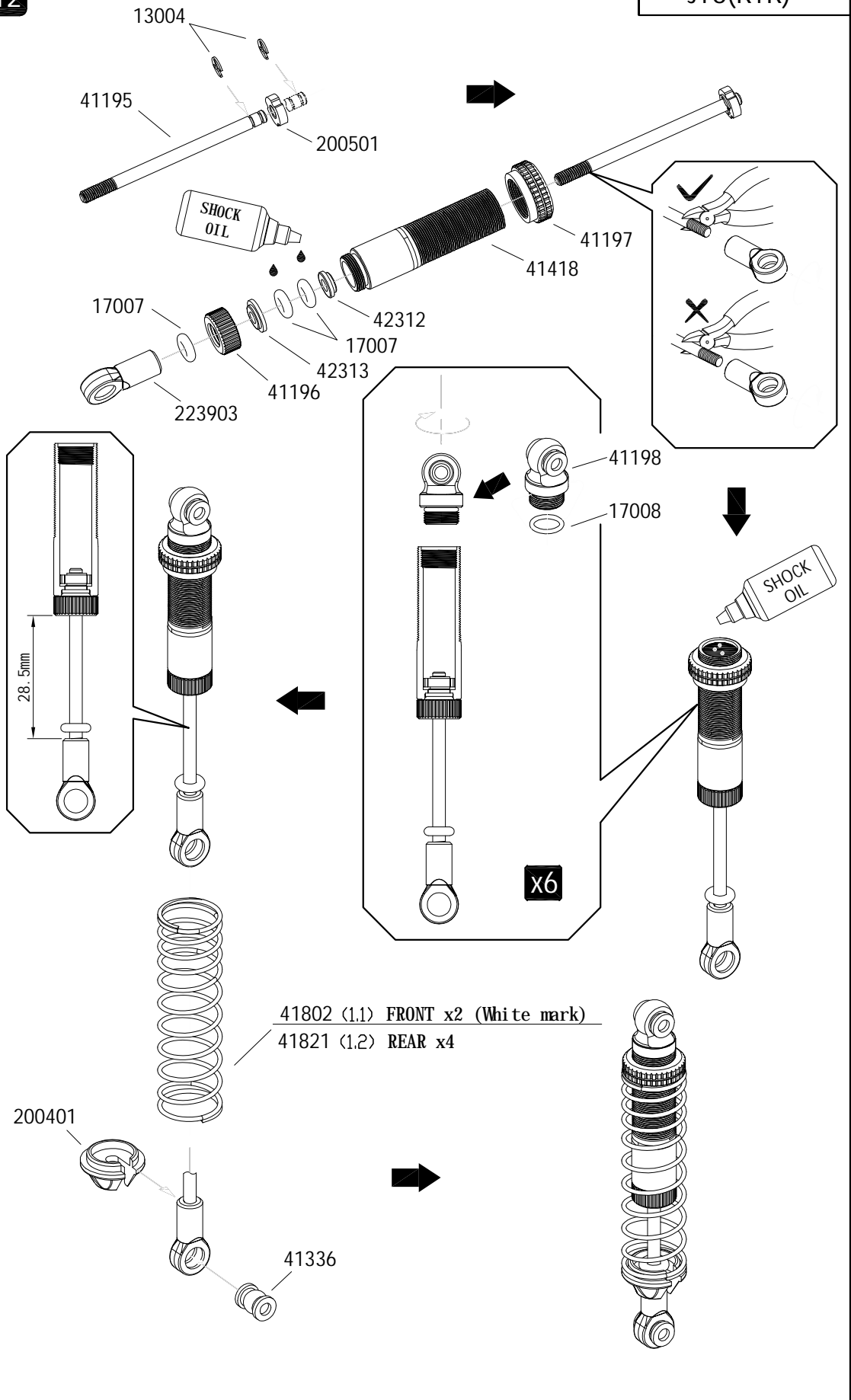
White mark



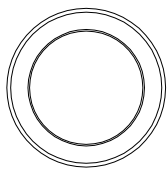
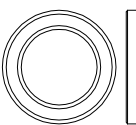
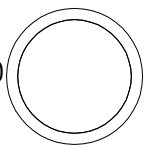


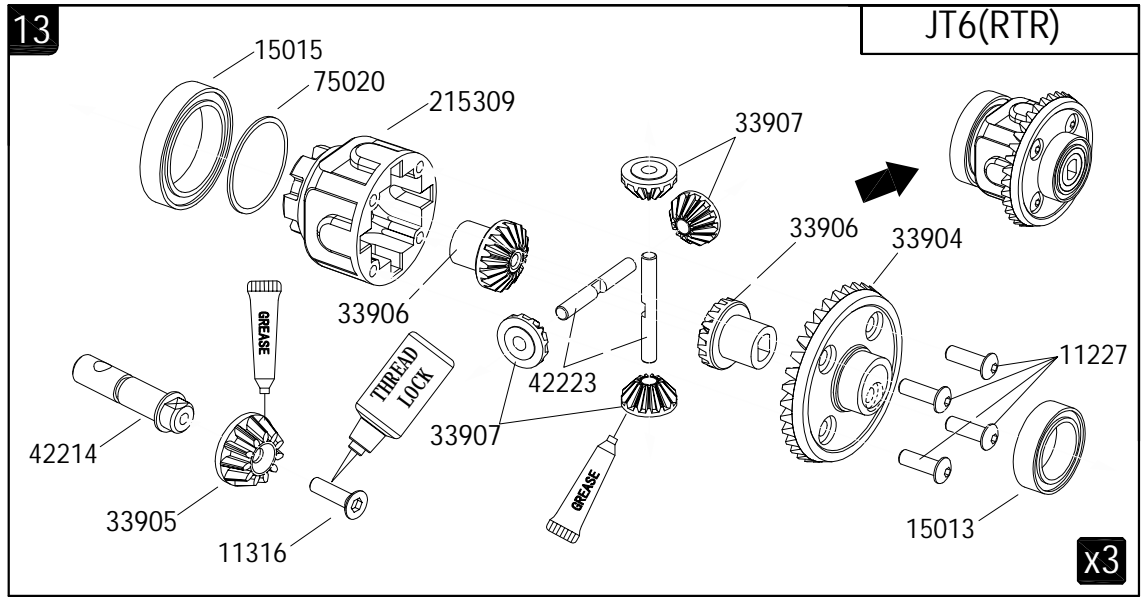
41802 X2(1.1)



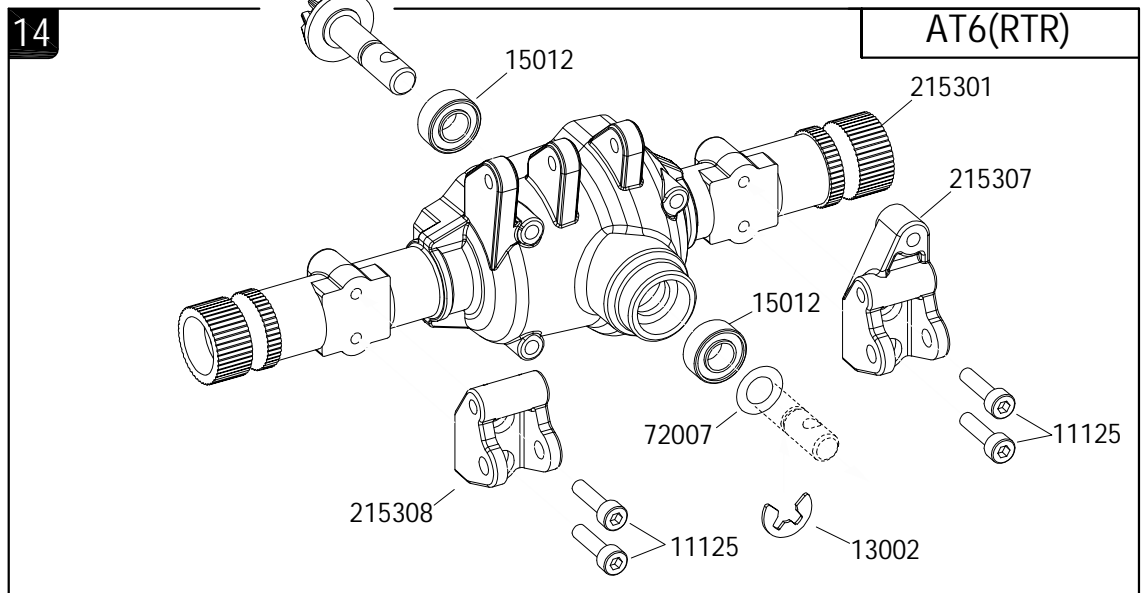
41821 X4(1.2)





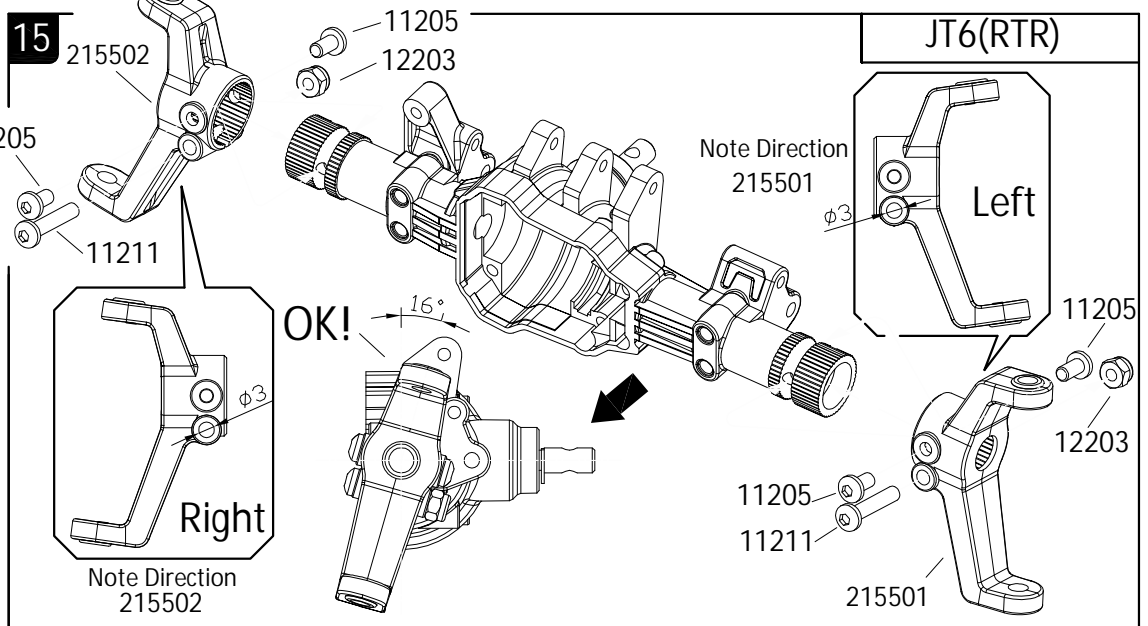
- 11316  M2.5x10 X3
- 11227  M2.5x8 X12
- 15015   $\phi 15 \times \phi 21 \times 4$  X3
- 15013   $\phi 10 \times \phi 15 \times 4$  X3
- 75020   $\phi 15 \times \phi 18 \times 0.2$  X3



- 15012   $\phi 5 \times \phi 10 \times 4$  X2
- 13002   $\phi 3.8 \times \phi 9.2 \times 0.6$  X1
- 72007   $\phi 5 \times \phi 8 \times 0.3$  X1



- 11125  M2.5x10 X4
- 11205  M3x6 X4
- 12203  M3 X2
- 11211  M3x18 X2

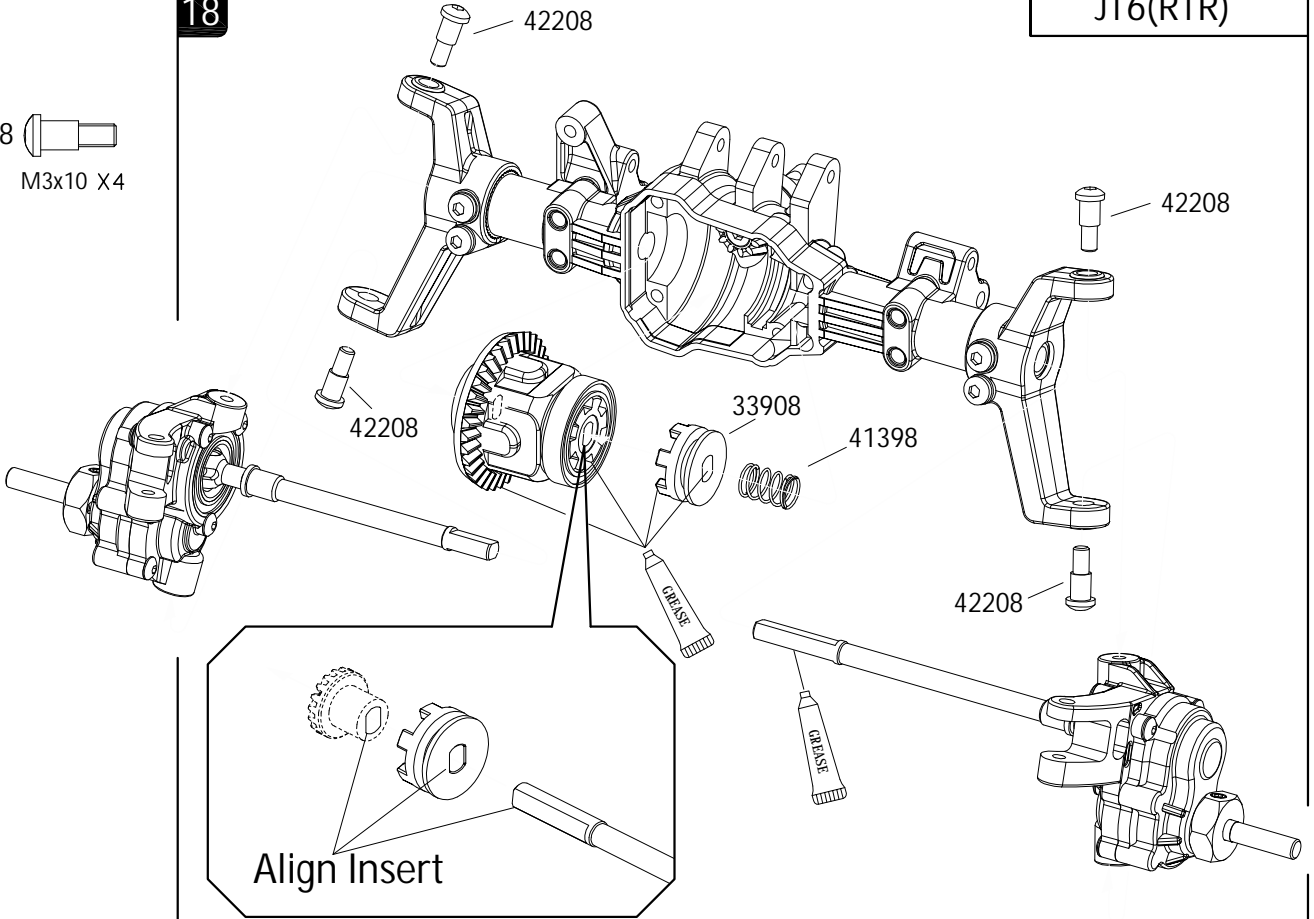




18

JT6(RTR)

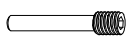
42208  
M3x10 X4



19

JT6(RTR)

11412  
M3x3 X1

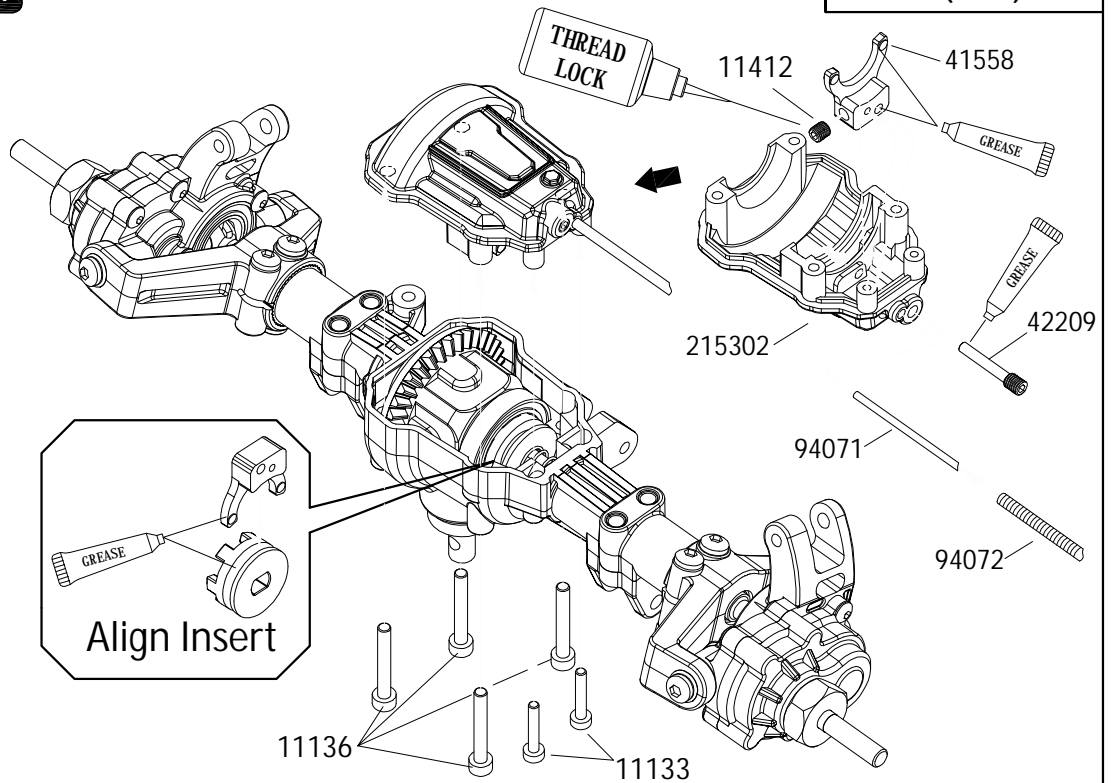


42209 X1

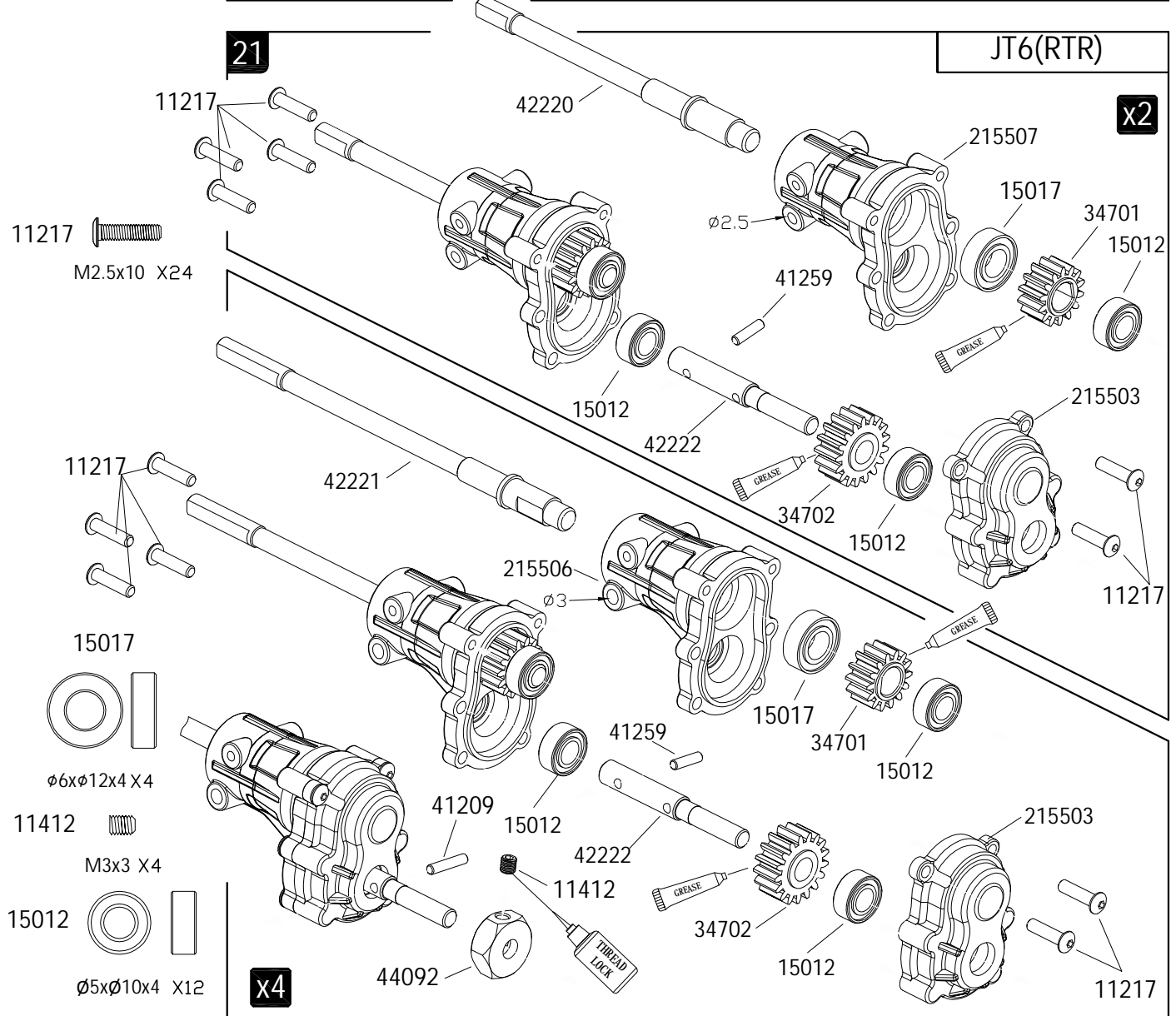
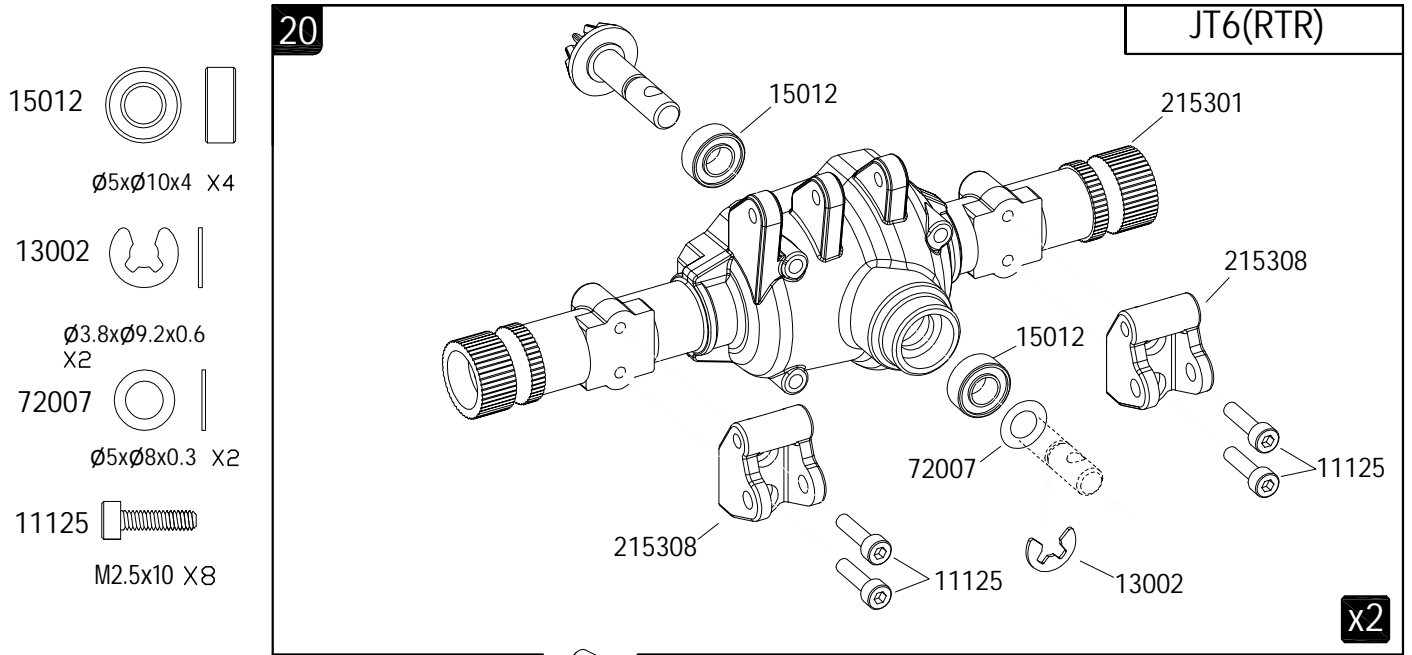
11133  
M2x12 X2



11136  
M2.5x18 X4








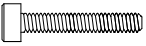
22

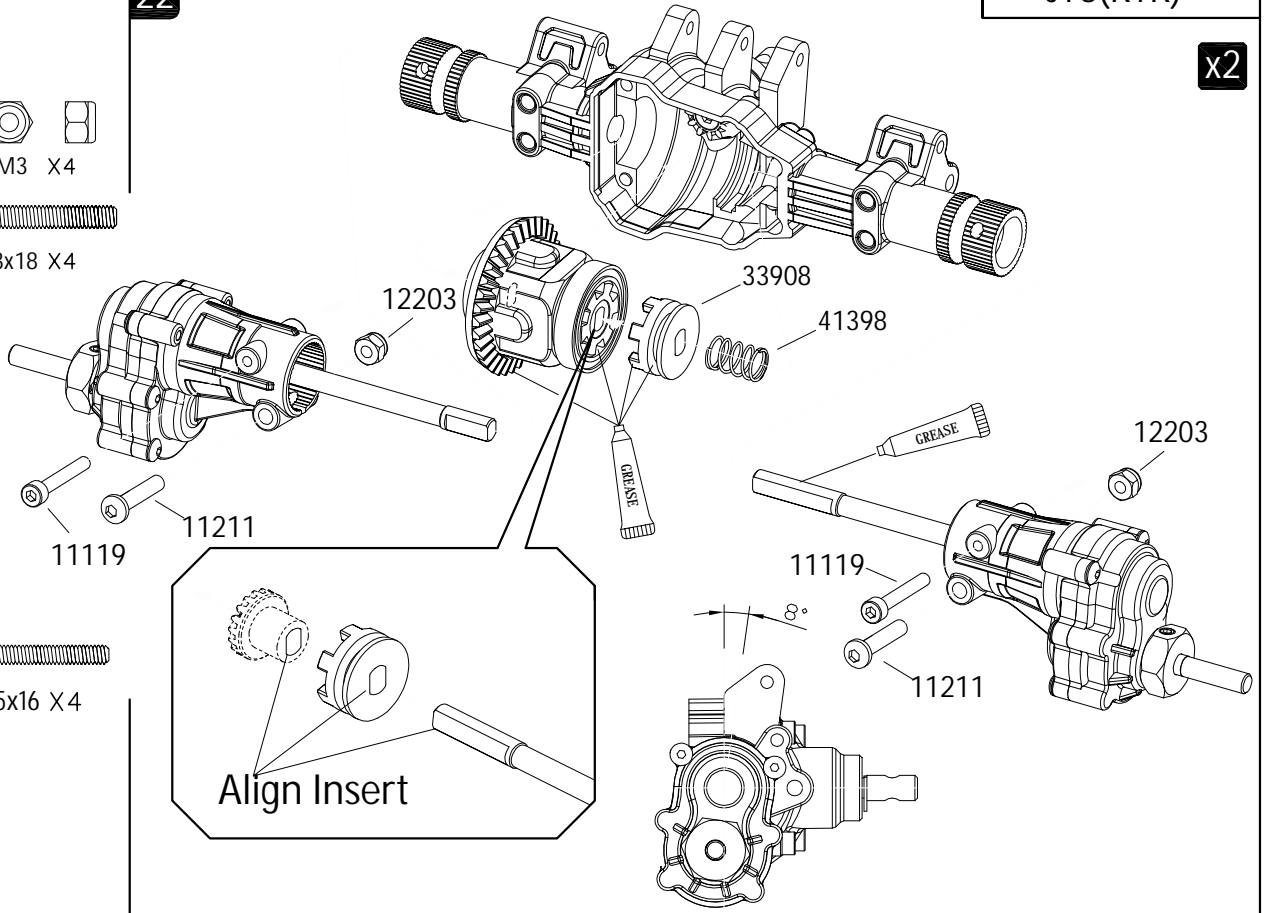
JT6(RTR)

x2

12203  M3 X4

11211  M3x18 X4


11119  M2.5x16 X4

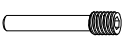


23

JT6(RTR)


x2

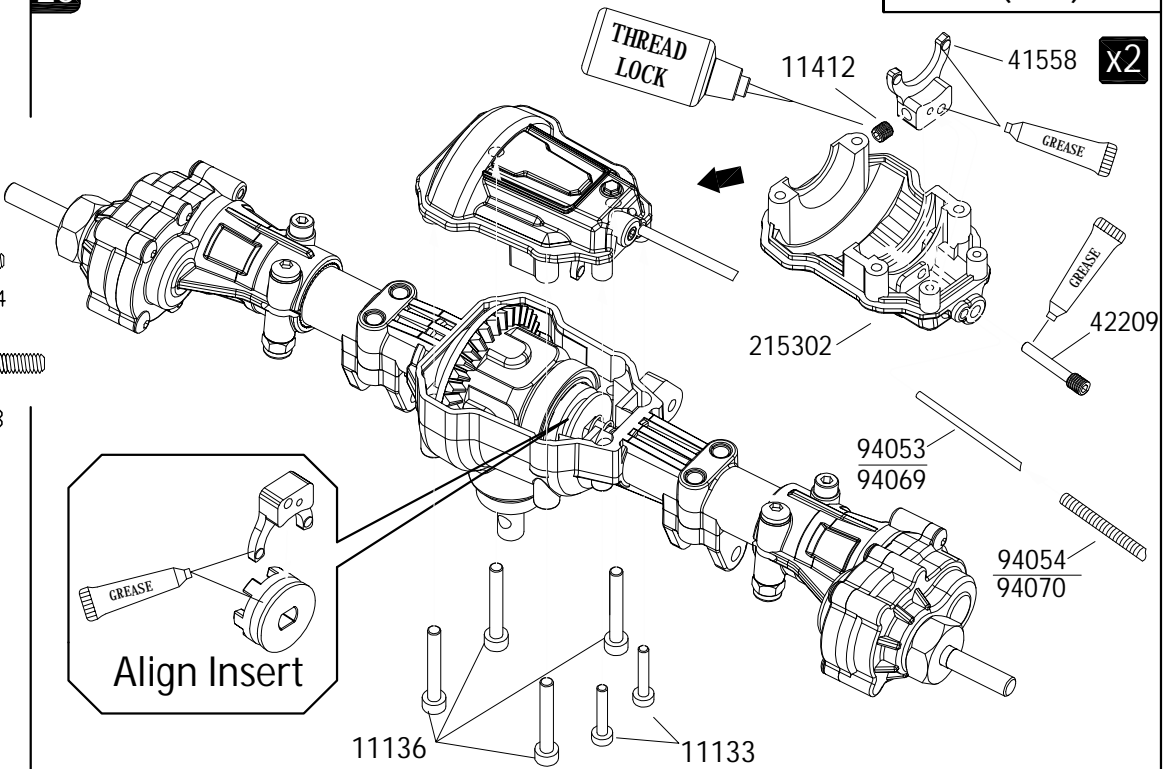
11412  M3x3 X2



42209 X2

11133  M2x12 X4

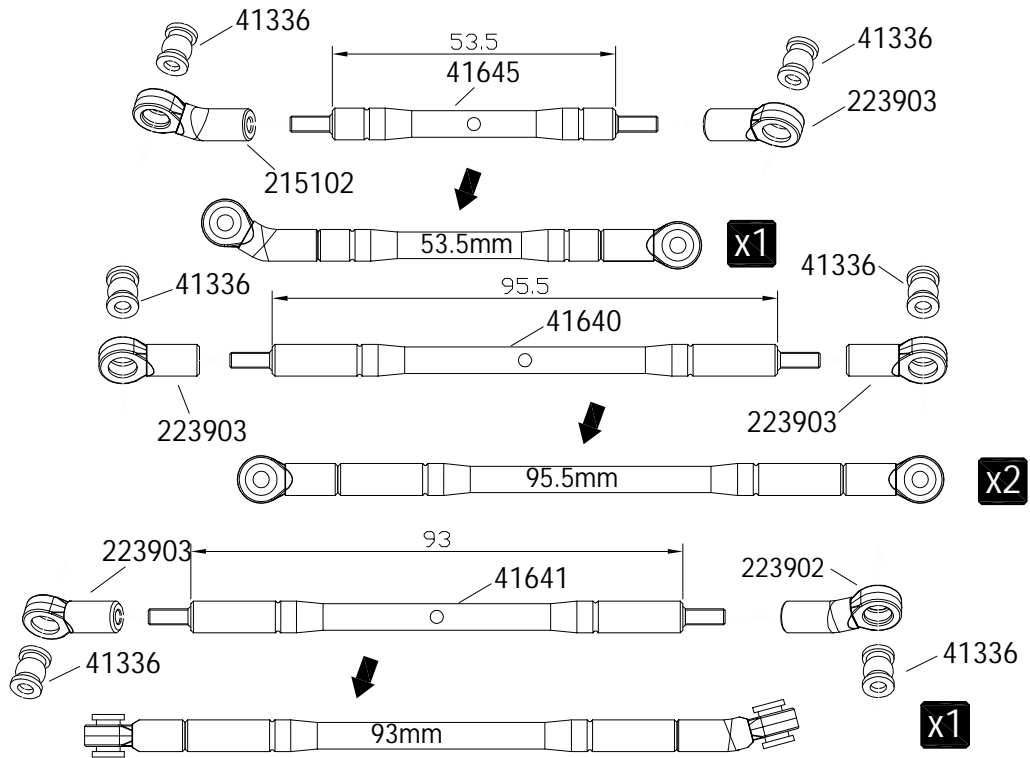
11136  M2.5x18 X8



24

JT6(RTR)

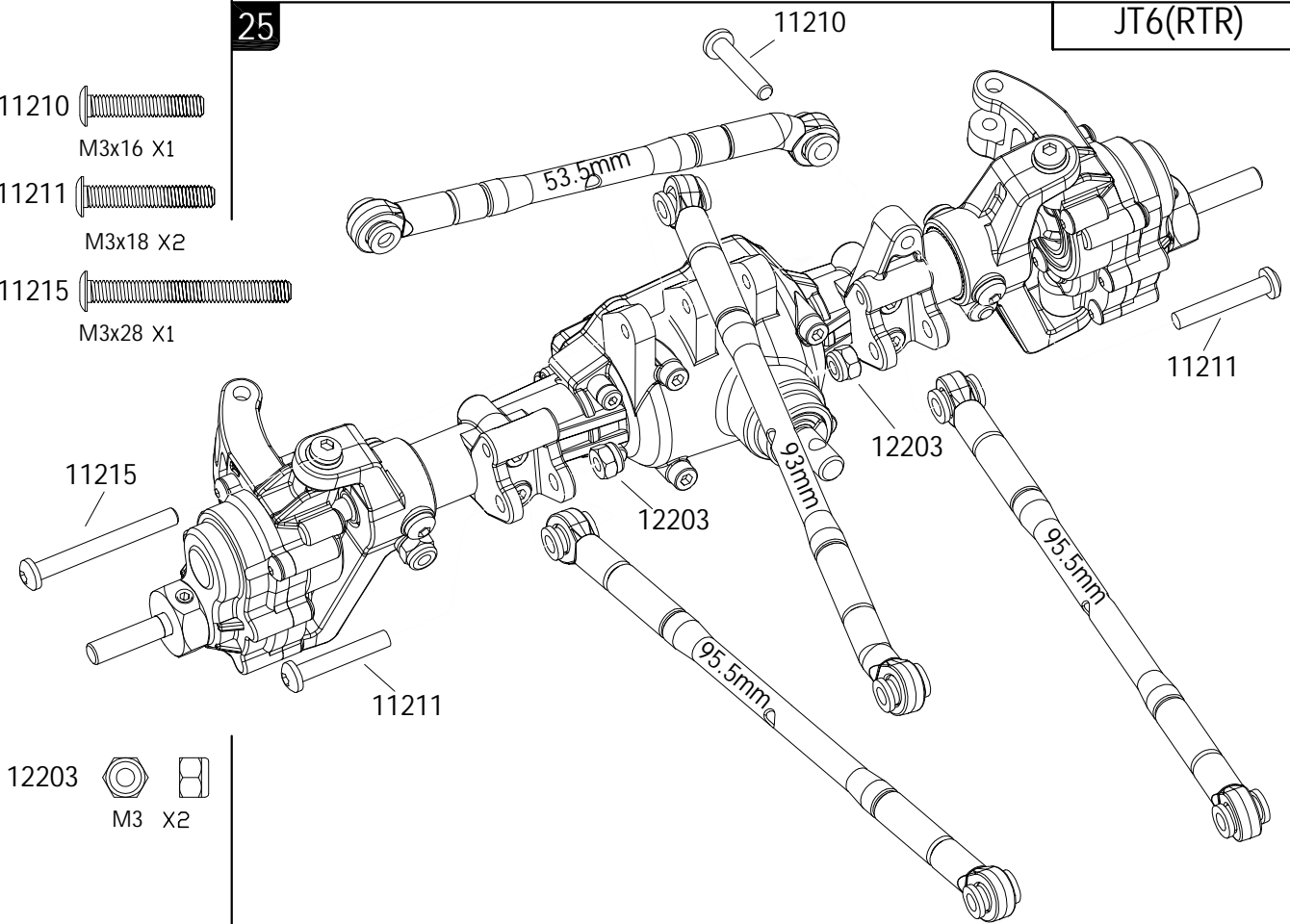
FRONT AXLE



25

JT6(RTR)

- 11210 M3x16 X1
- 11211 M3x18 X2
- 11215 M3x28 X1



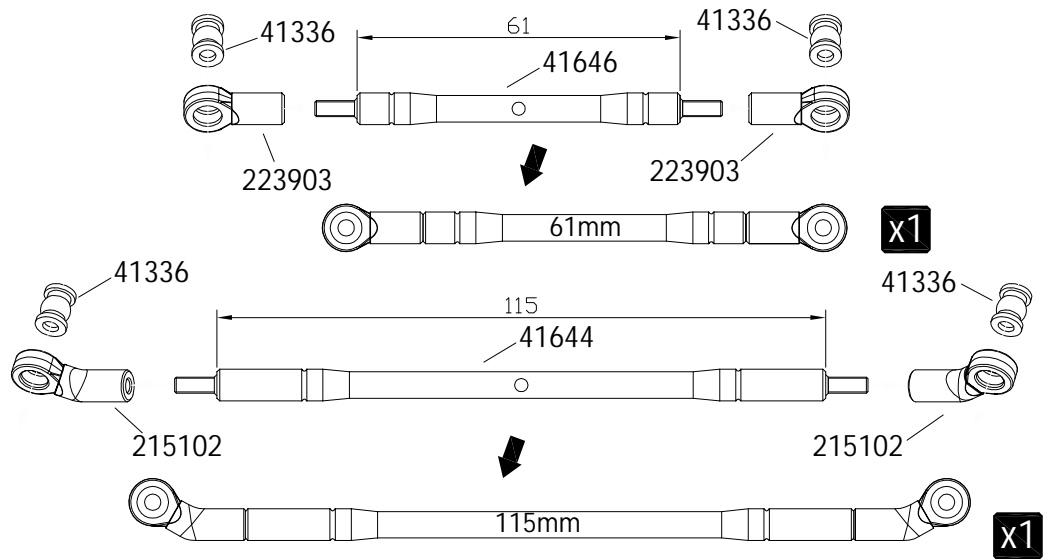
- 12203 M3 X2



26

JT6(RTR)

41336 X4

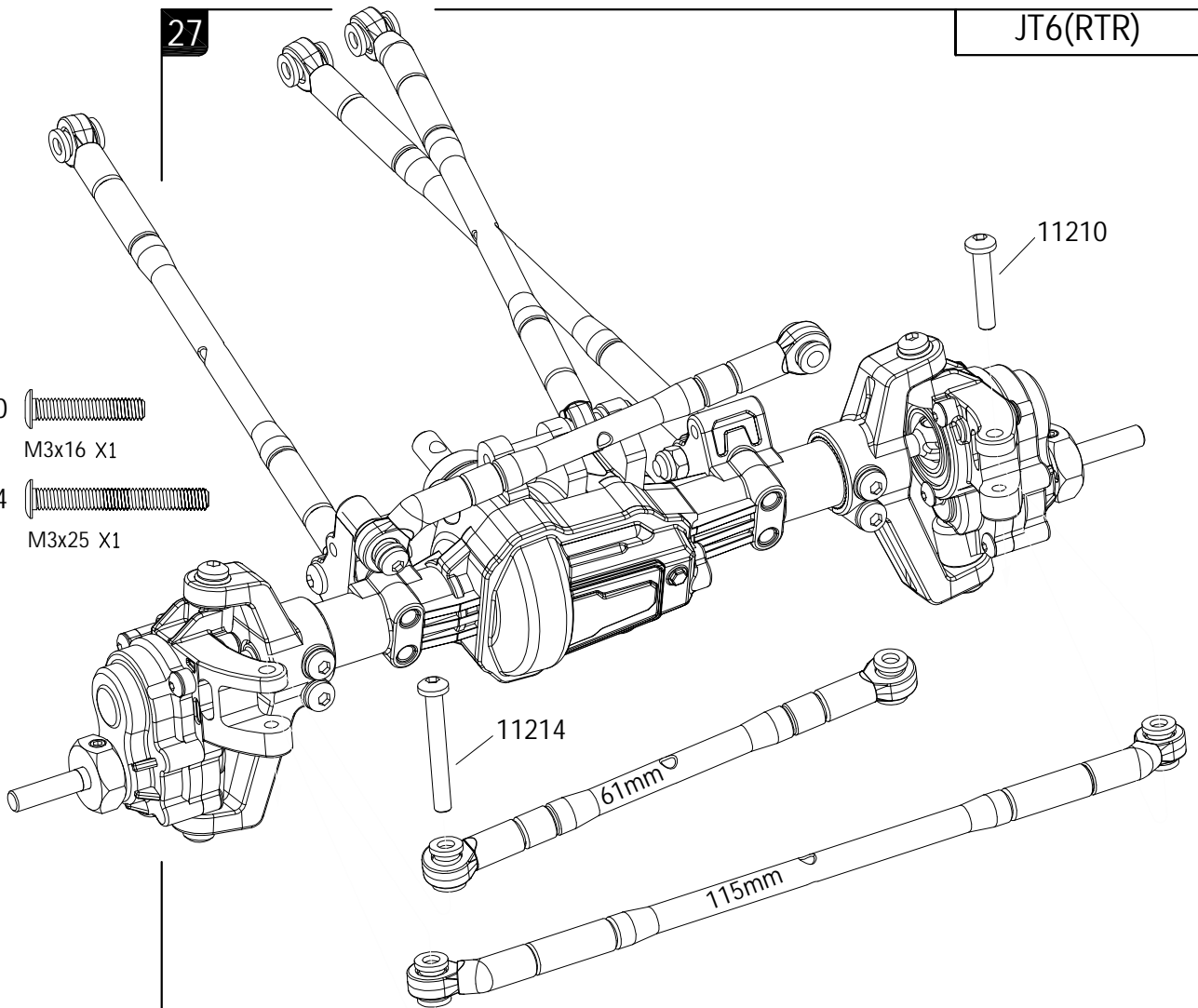


27

JT6(RTR)

11210 M3x16 X1

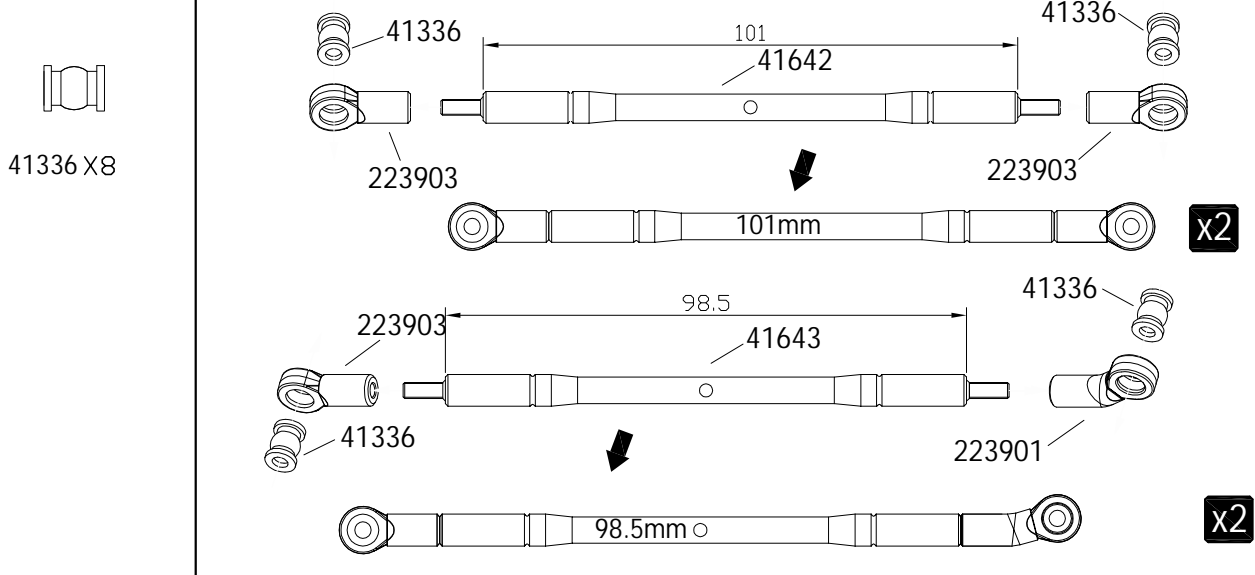
11214 M3x25 X1



28

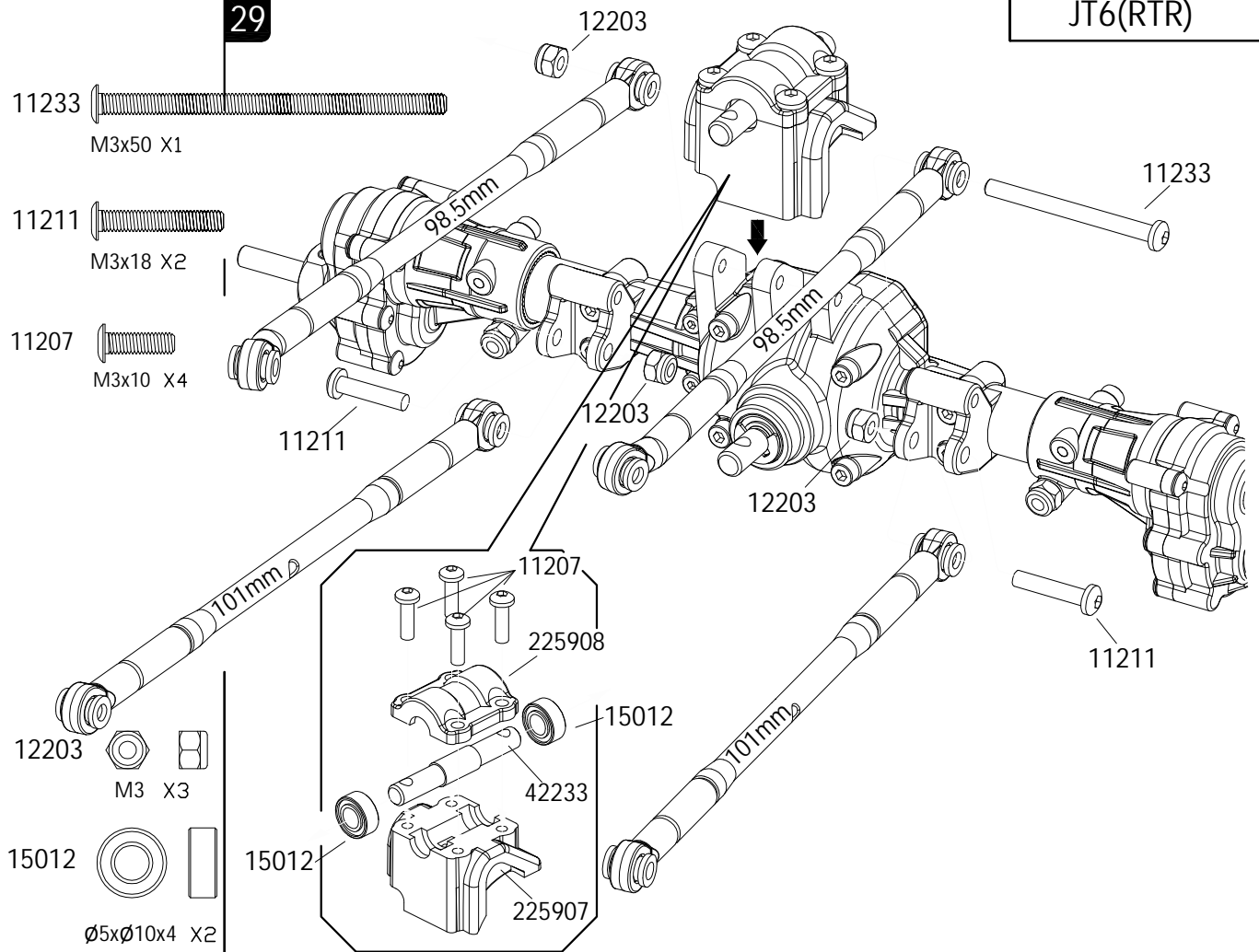
JT6(RTR)

MIDDLE AXLE



29

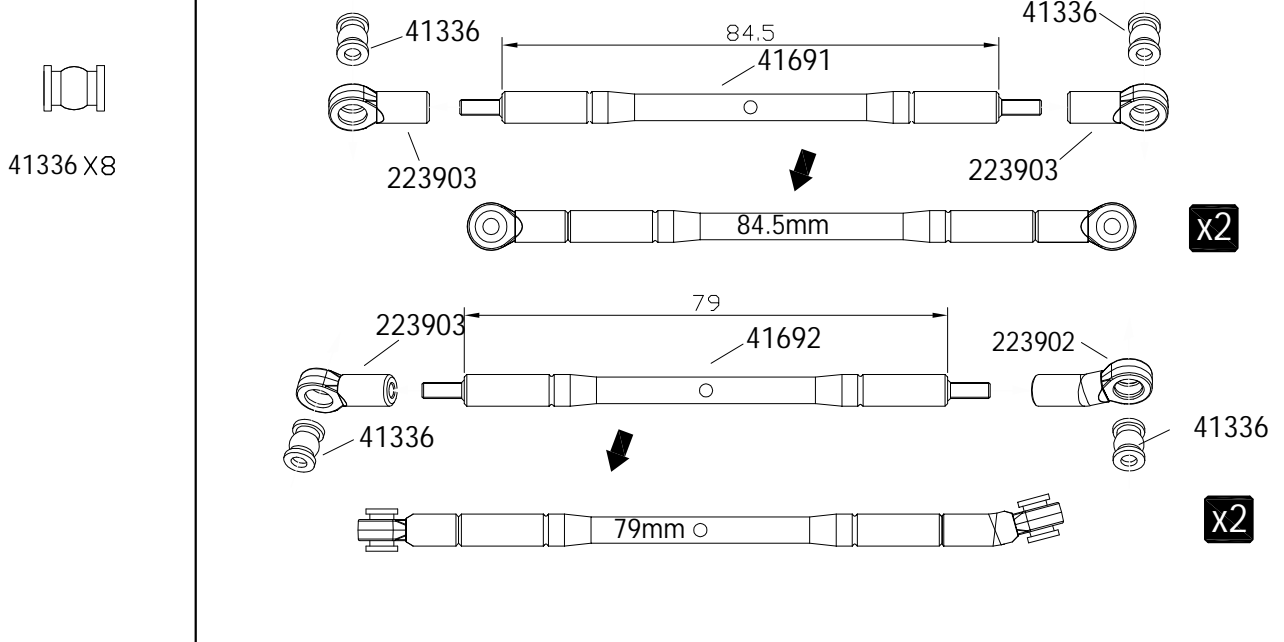
JT6(RTR)



30

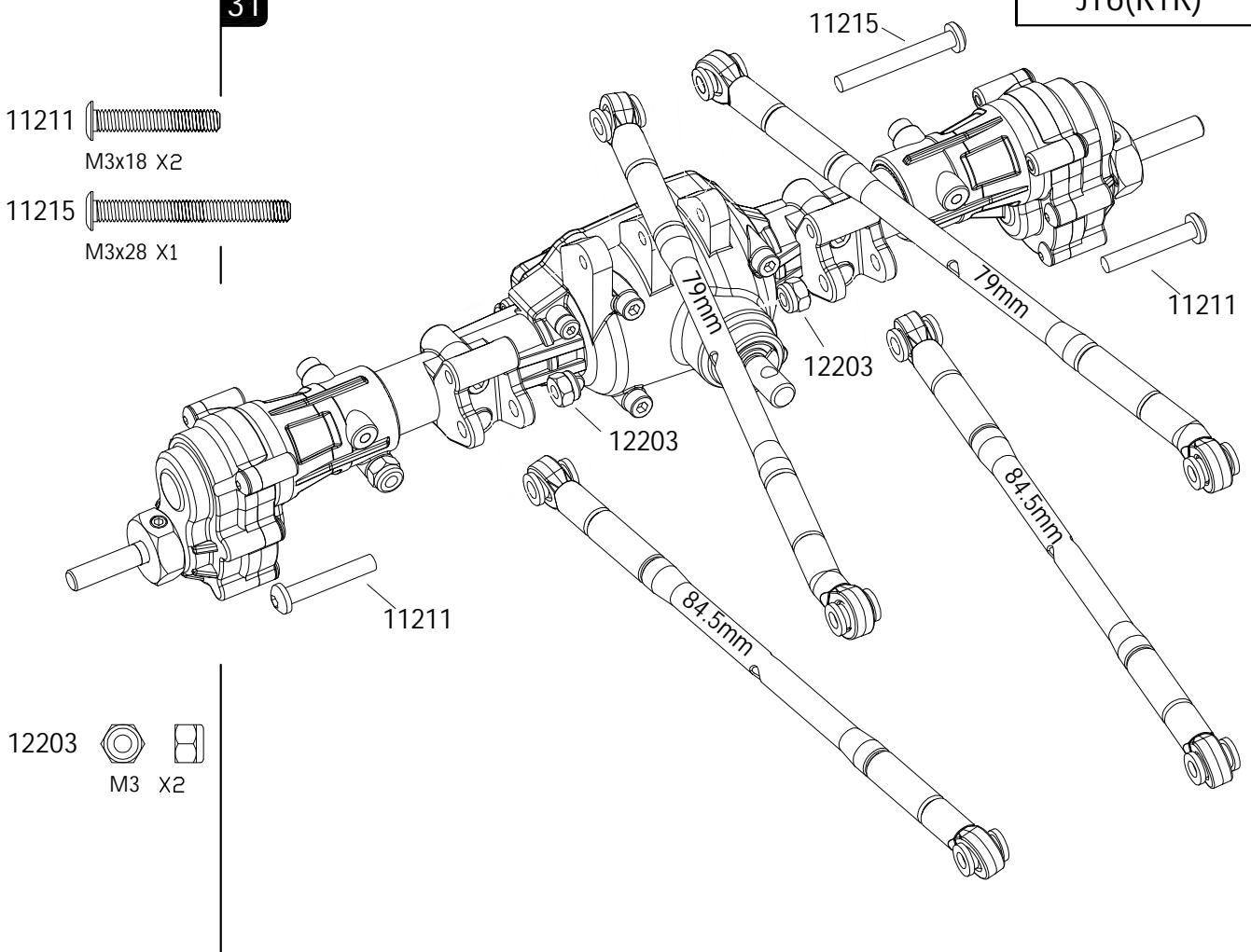
JT6(RTR)

REAR AXLE




31

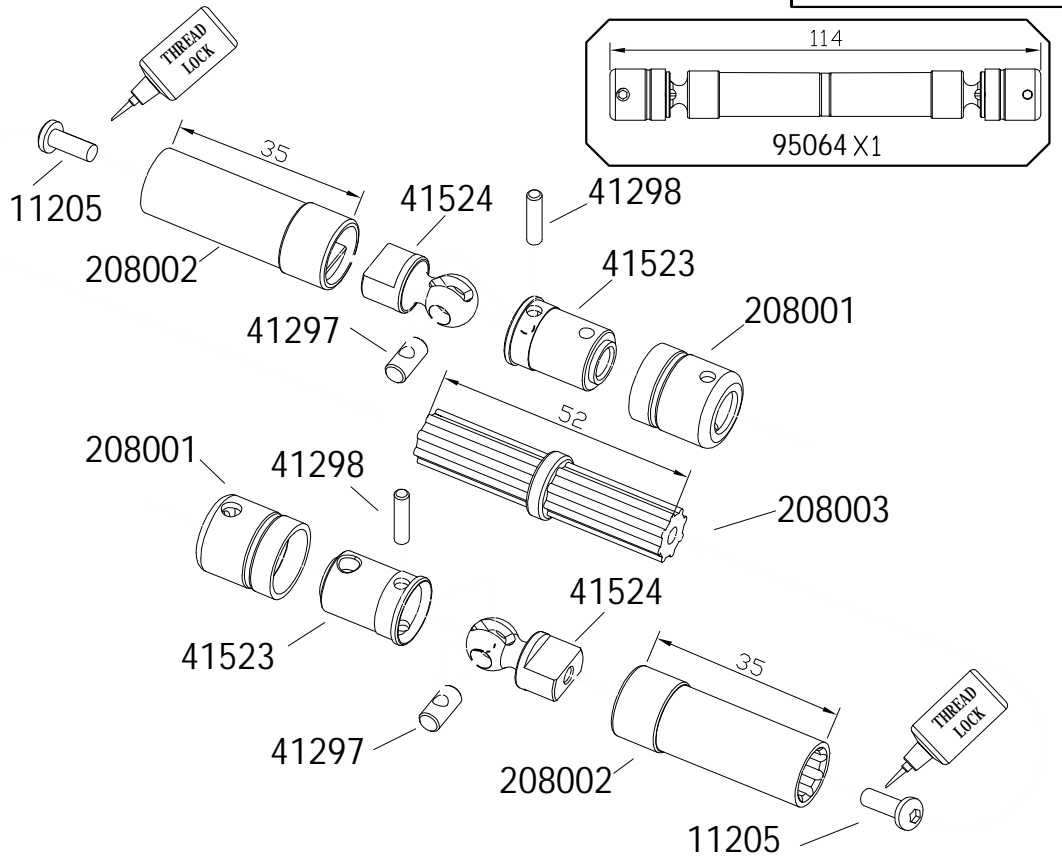
JT6(RTR)



32


JT6(RTR)

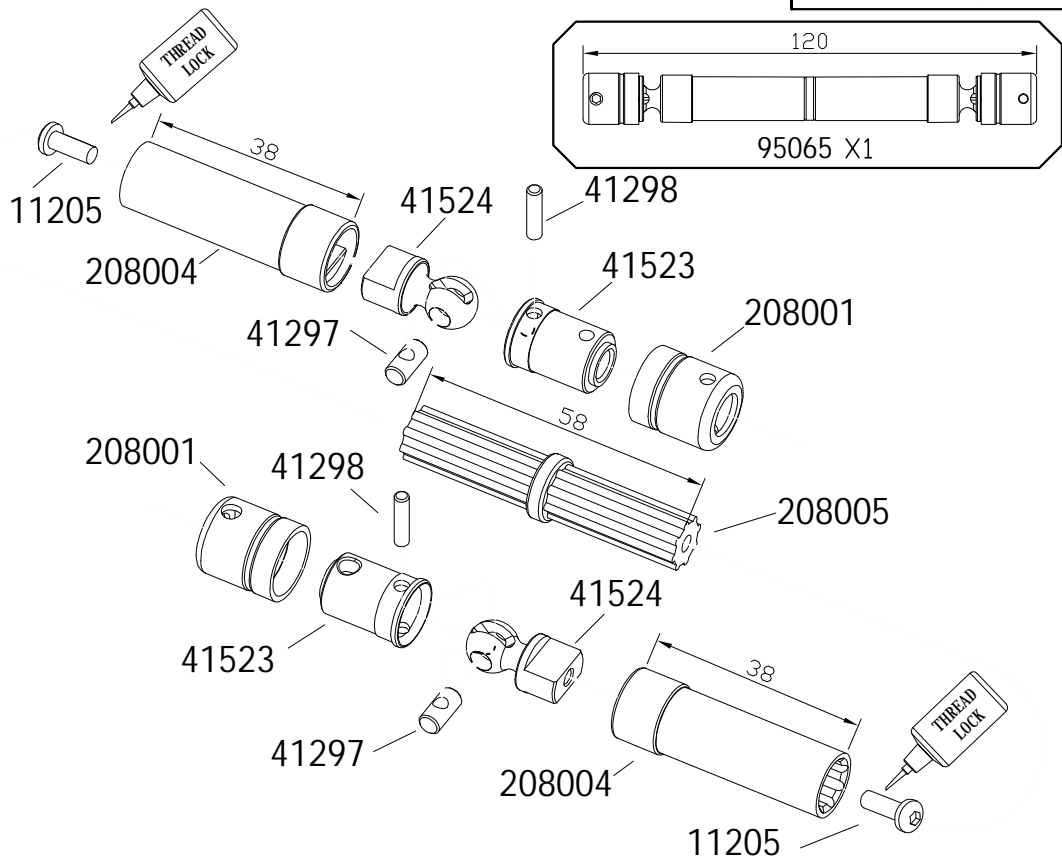
11205   
M3x6 X2



33


JT6(RTR)

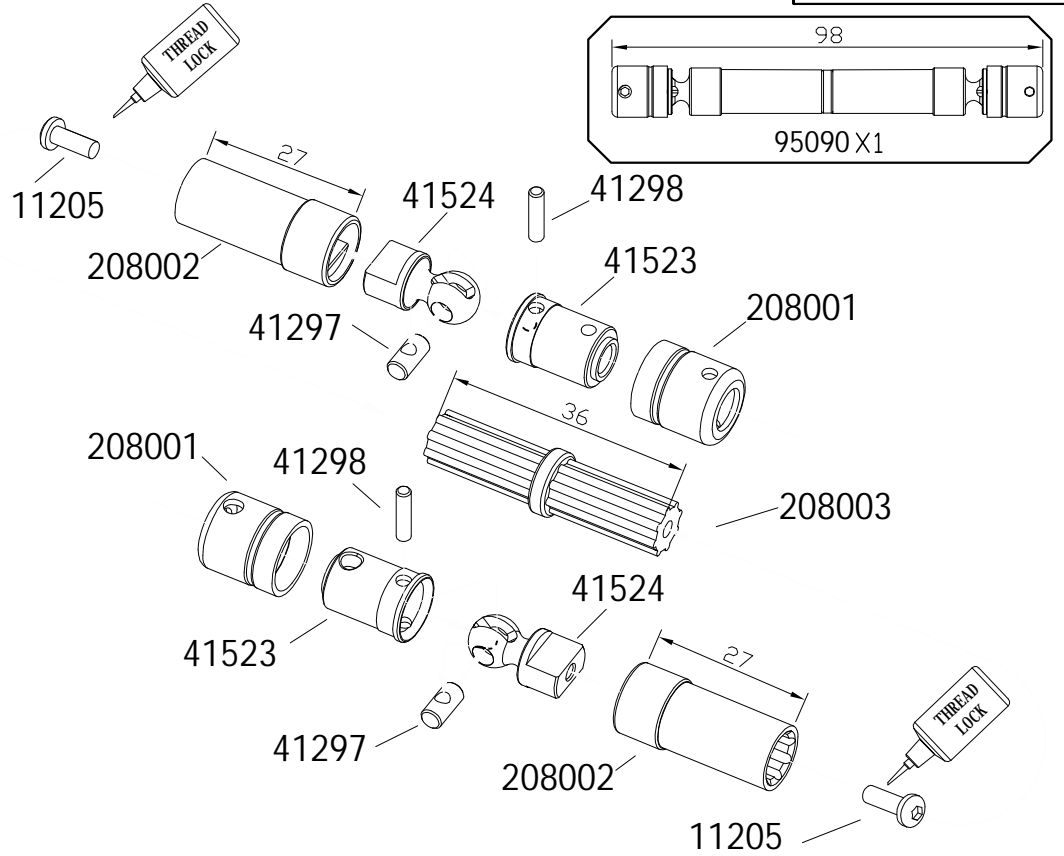
11205   
M3x6 X2



34


JT6(RTR)

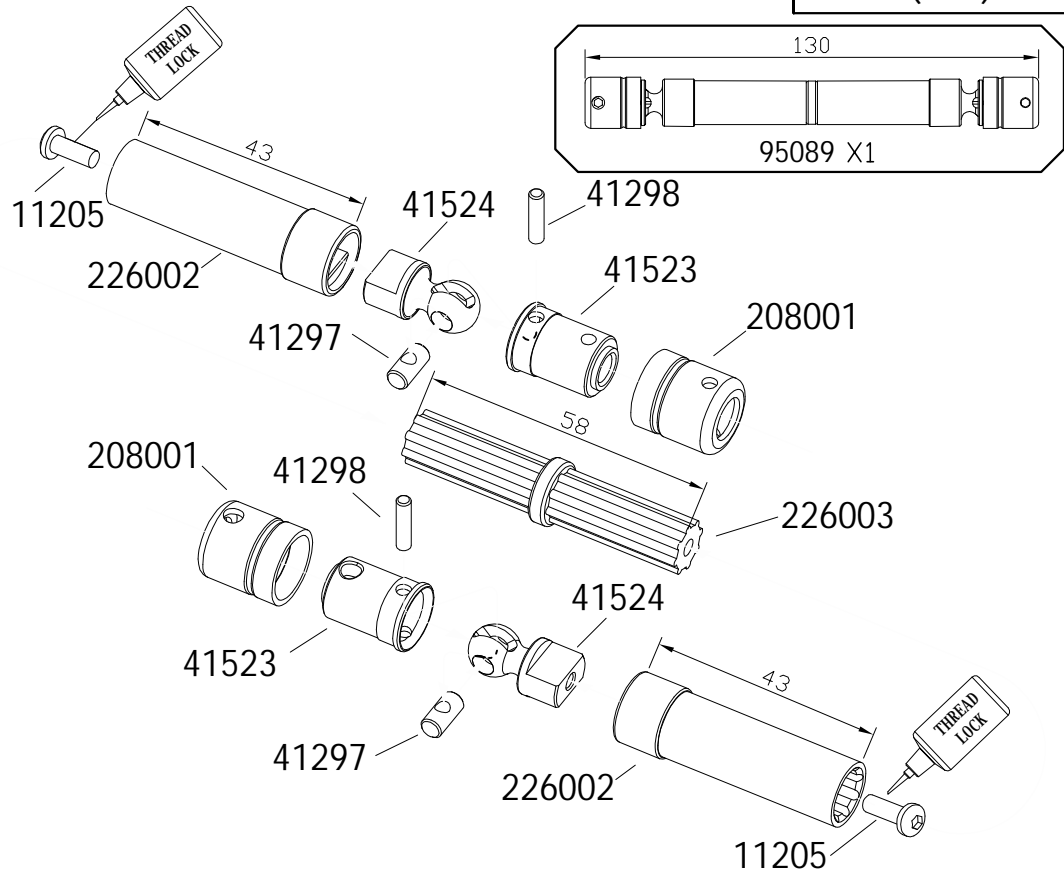
11205   
M3x6 X2

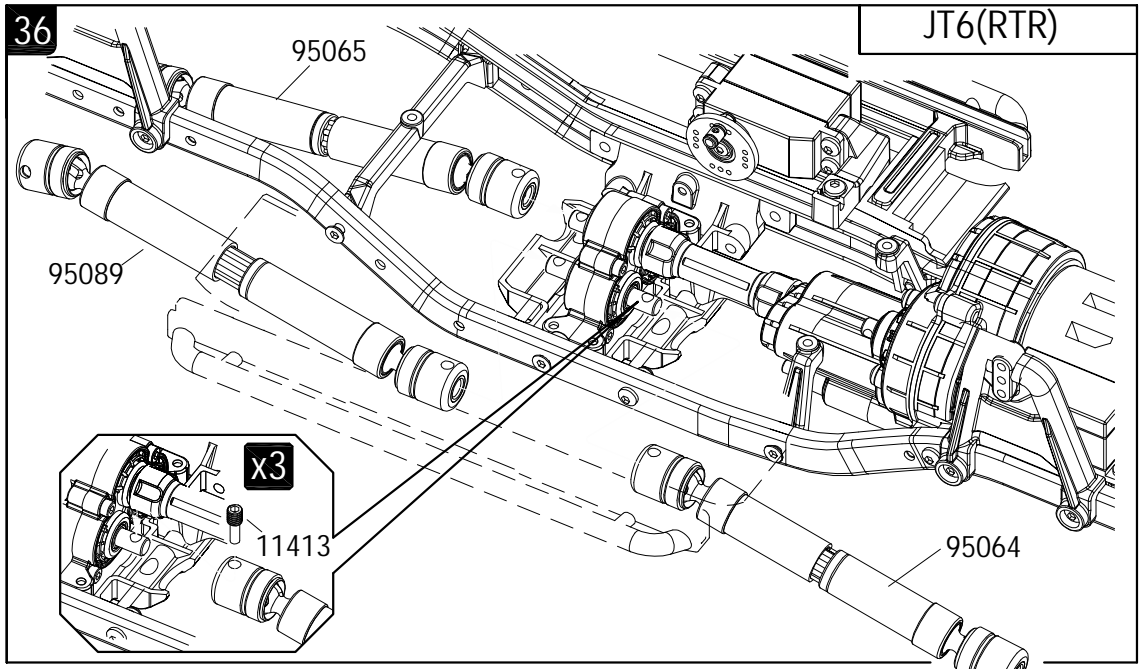



35

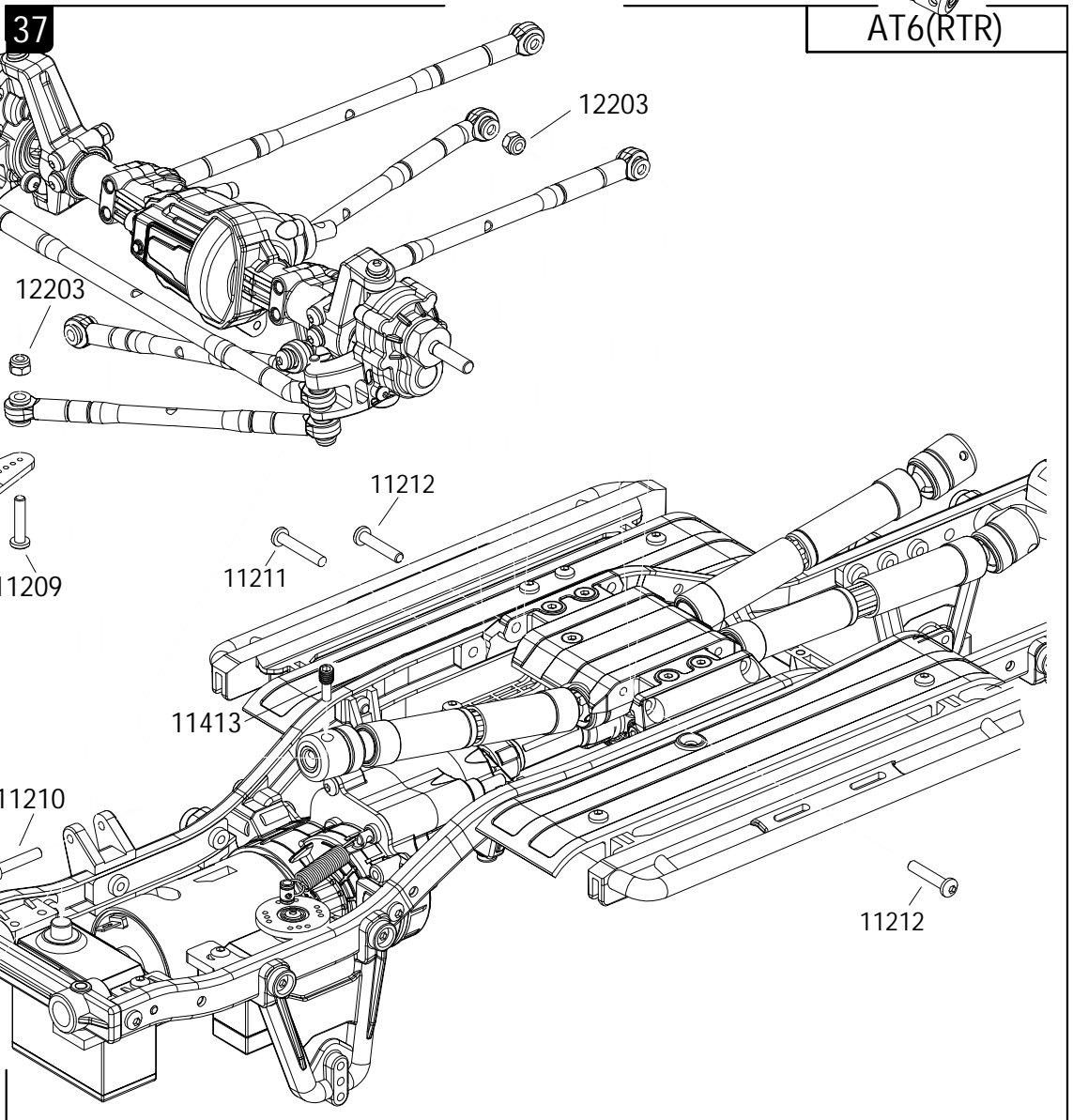
JT6(RTR)


11205   
M3x6 X2








- 11413  M4x12 X3





- 11211  M3x18 X1


- 11212  M3x20 X2

- 11206  M3x8 X1

- 11209  M3x14 X1


- 11413  M4x12 X1


- 11210  M3x16 X1


- 12203  M3 X2


38


JT6(RTR)

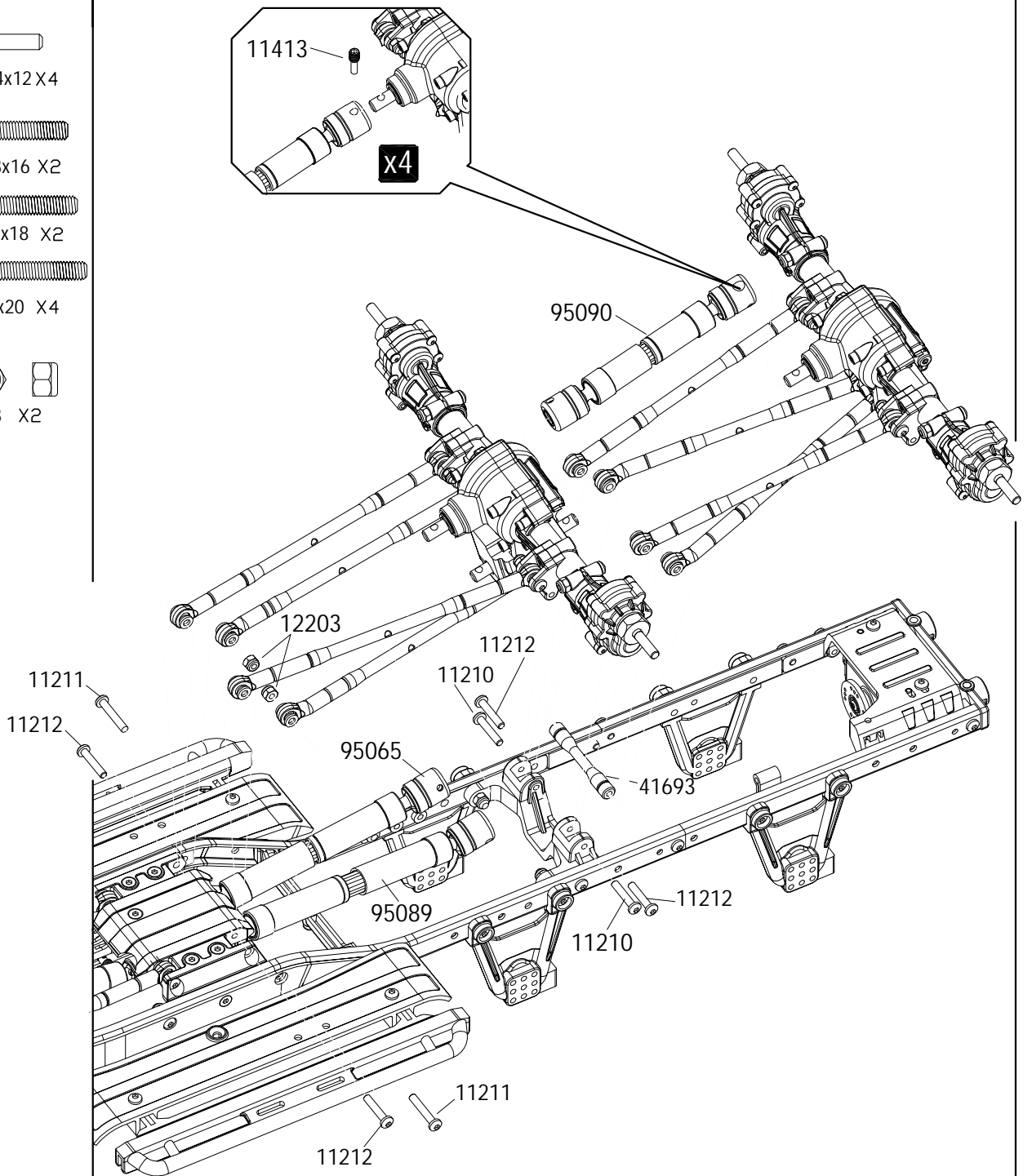
11413   
M4x12 X4

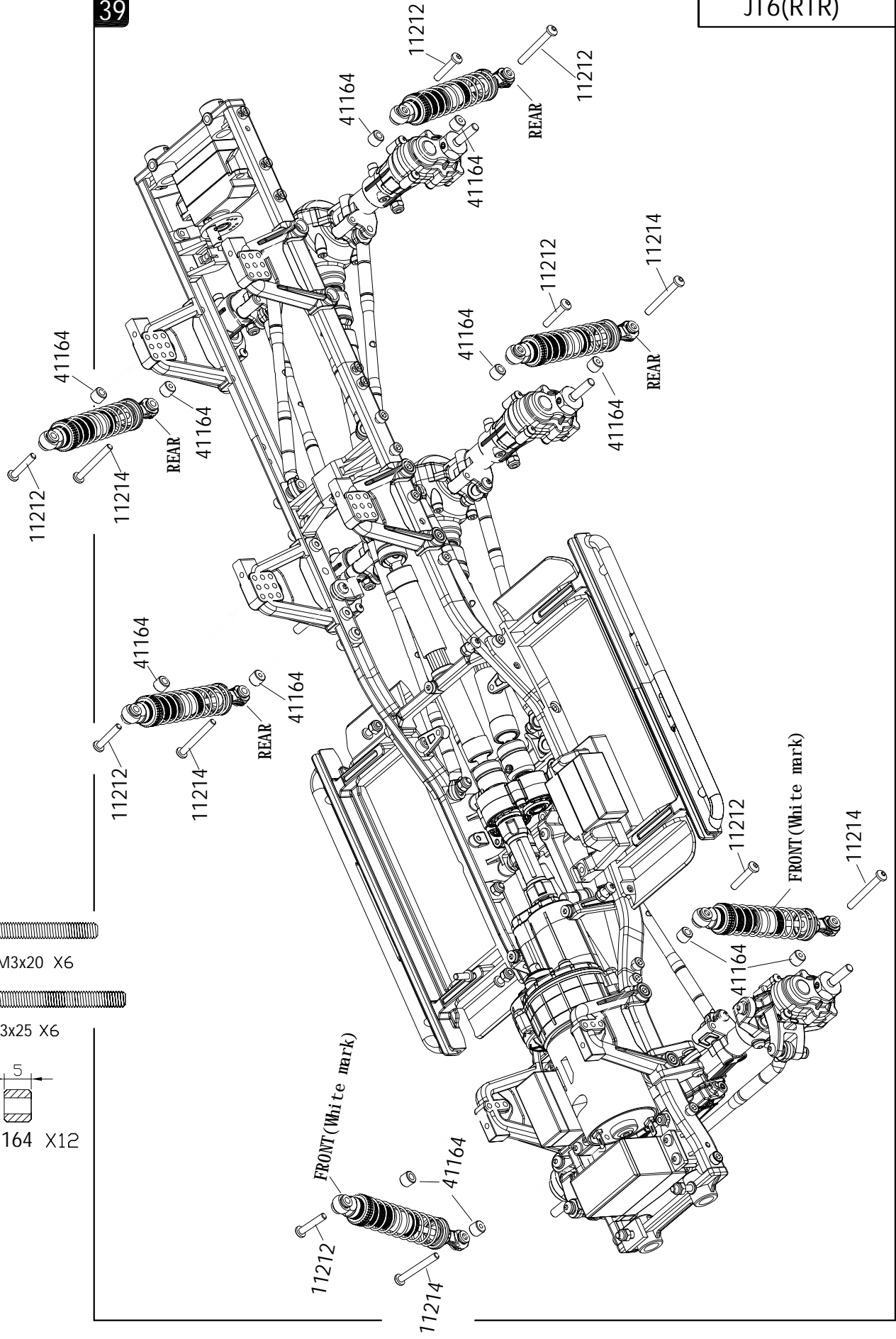
11210   
M3x16 X2


11211   
M3x18 X2


11212   
M3x20 X4

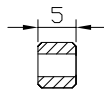
12203   
M3 X2








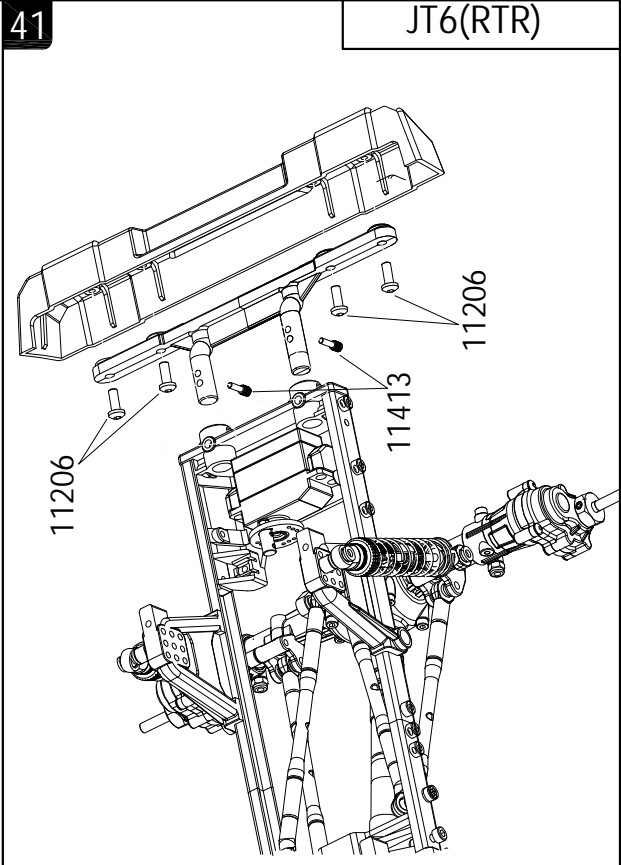
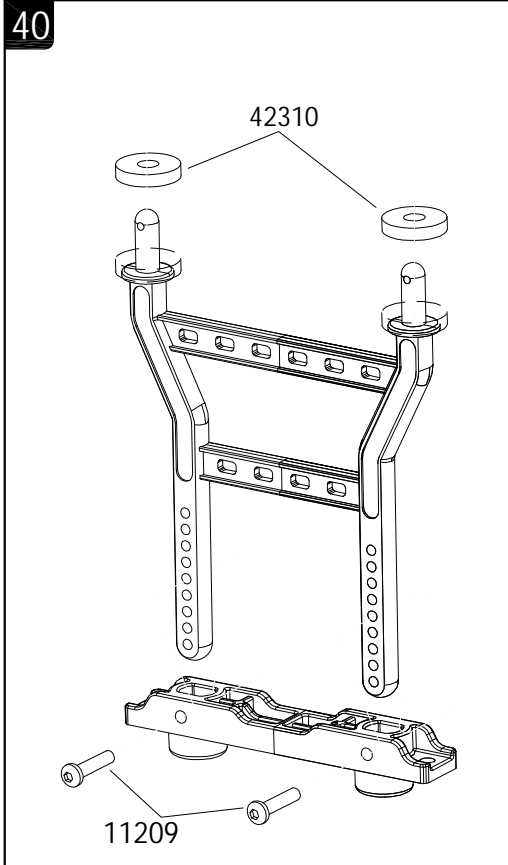
11212   
M3x20 X6




11214   
M3x25 X6

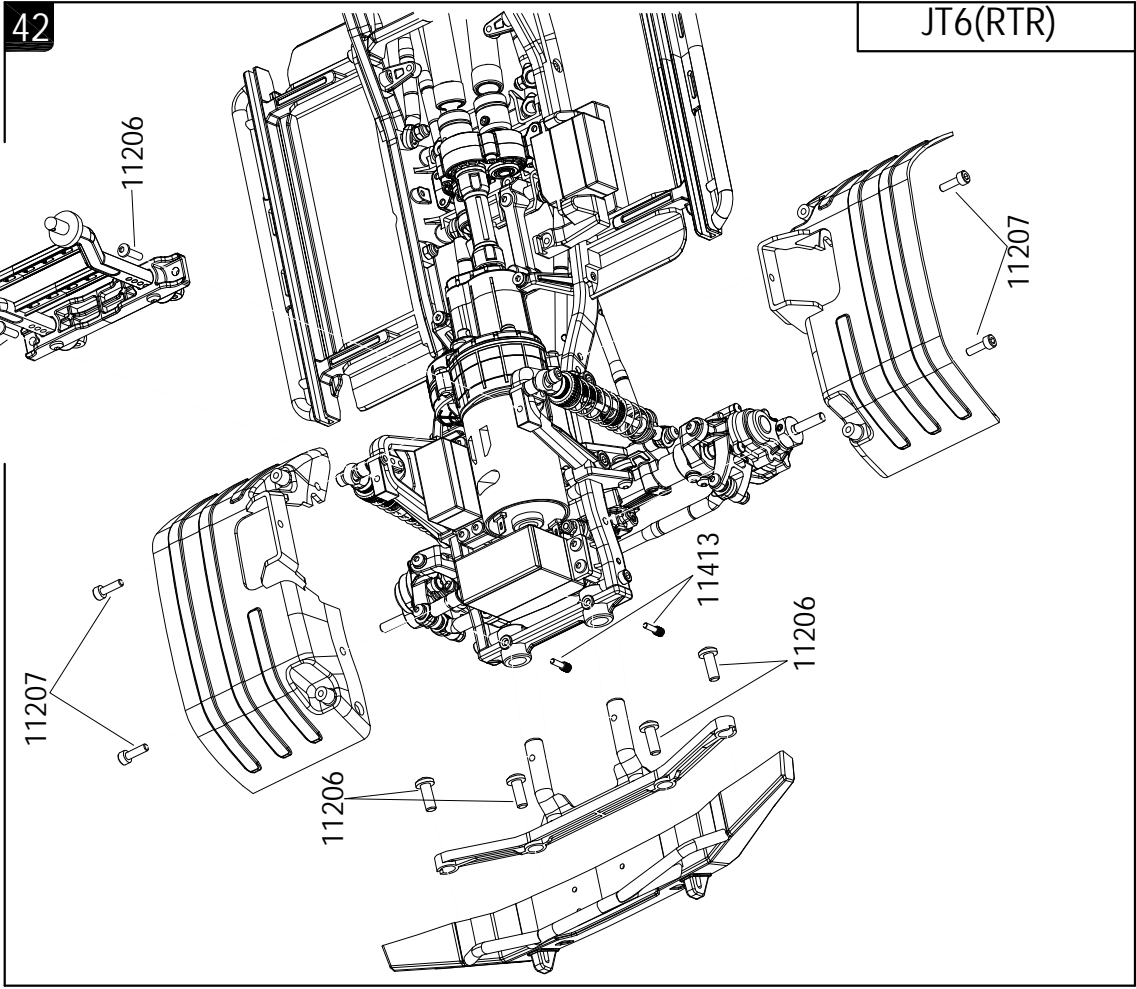
  
41164 X12



- 11206  M3x8 X4
- 11209  M3x14 X2
- 11413  M4x12 X2







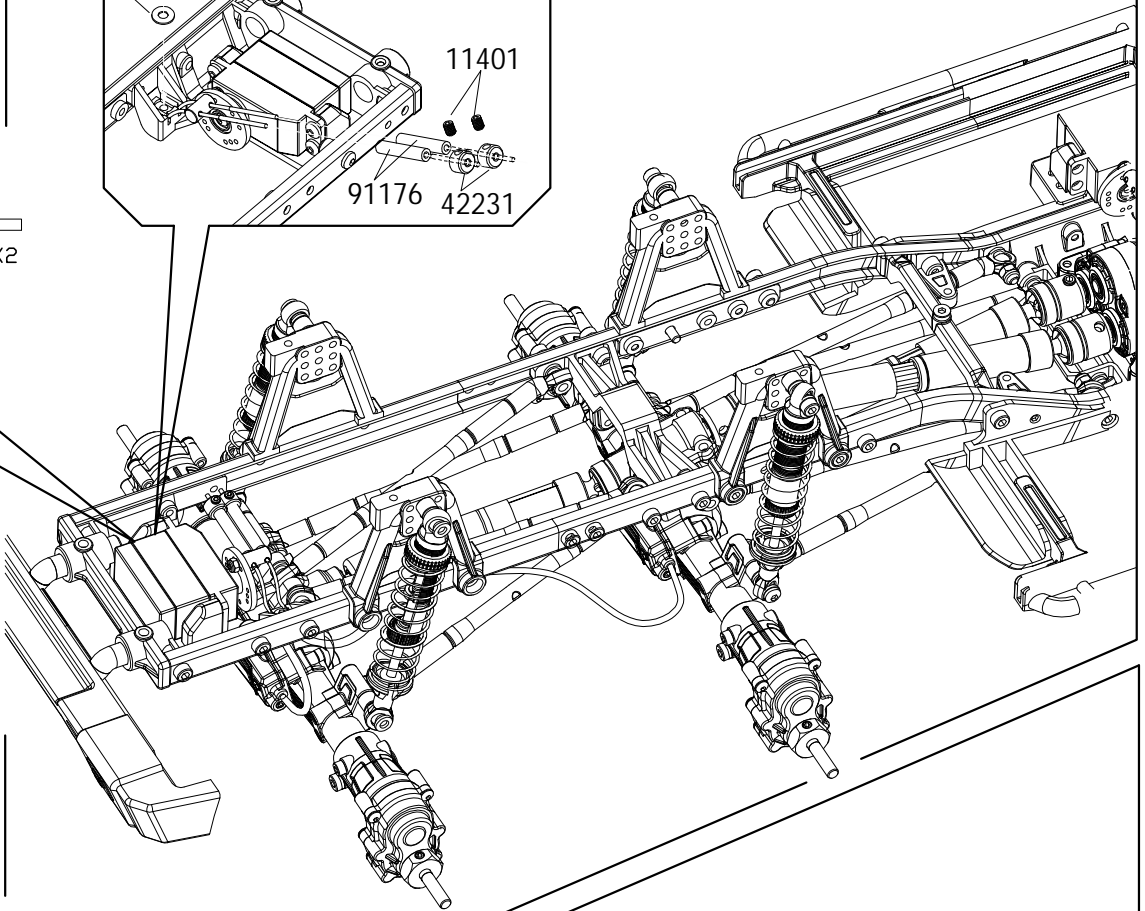
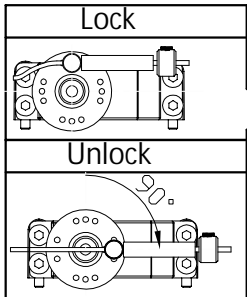
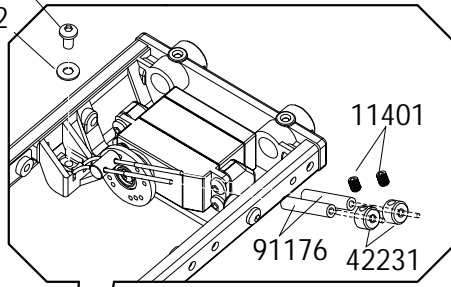
- 11413  M4x12 X2
- 11206  M3x8 X6
- 11207  M3x10 X4



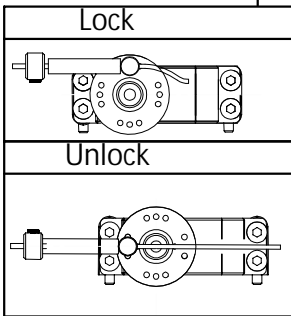
JT6(RTR)





43

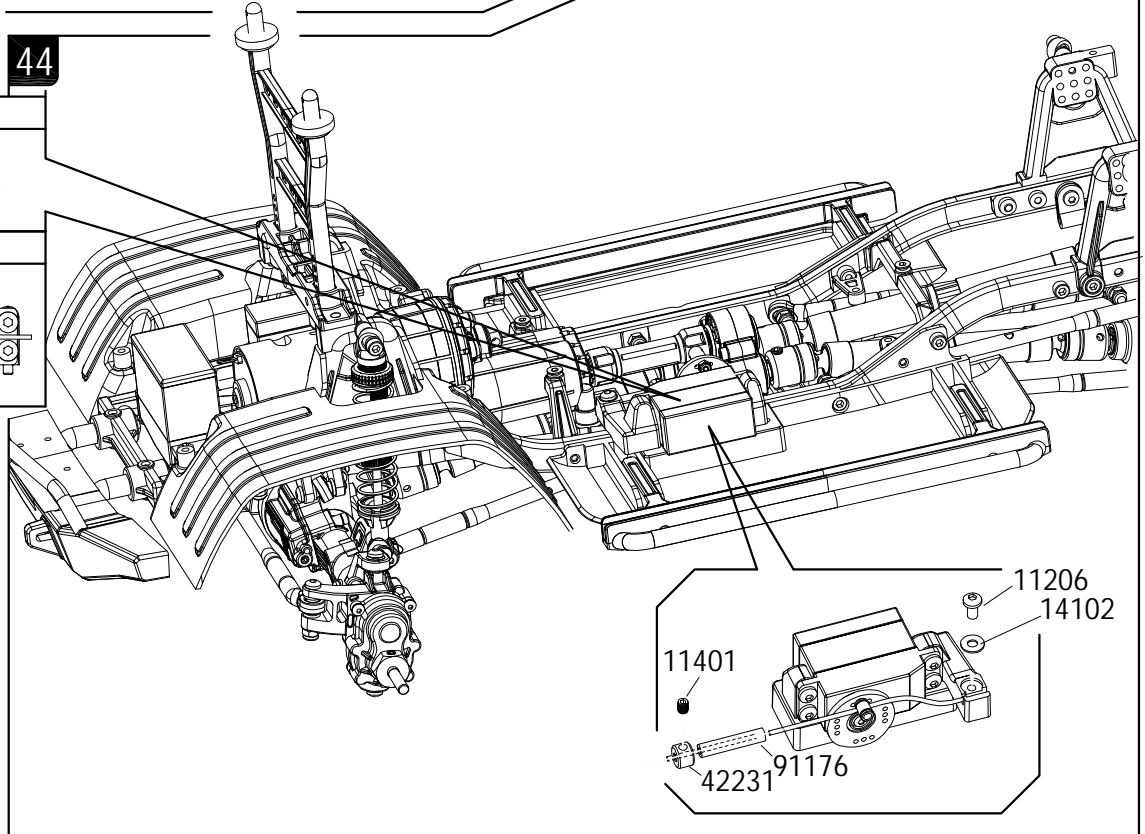
- 11206  M3x8 X1
- 14102   $\varnothing 3 \times \varnothing 7 \times 0.5$  X1
- 11401  M3x4 X2
- 41688   $\varnothing 1.3 \times \varnothing 1 \times 20$  X2




44




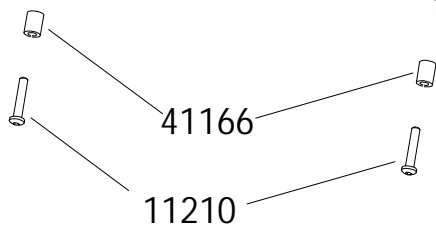
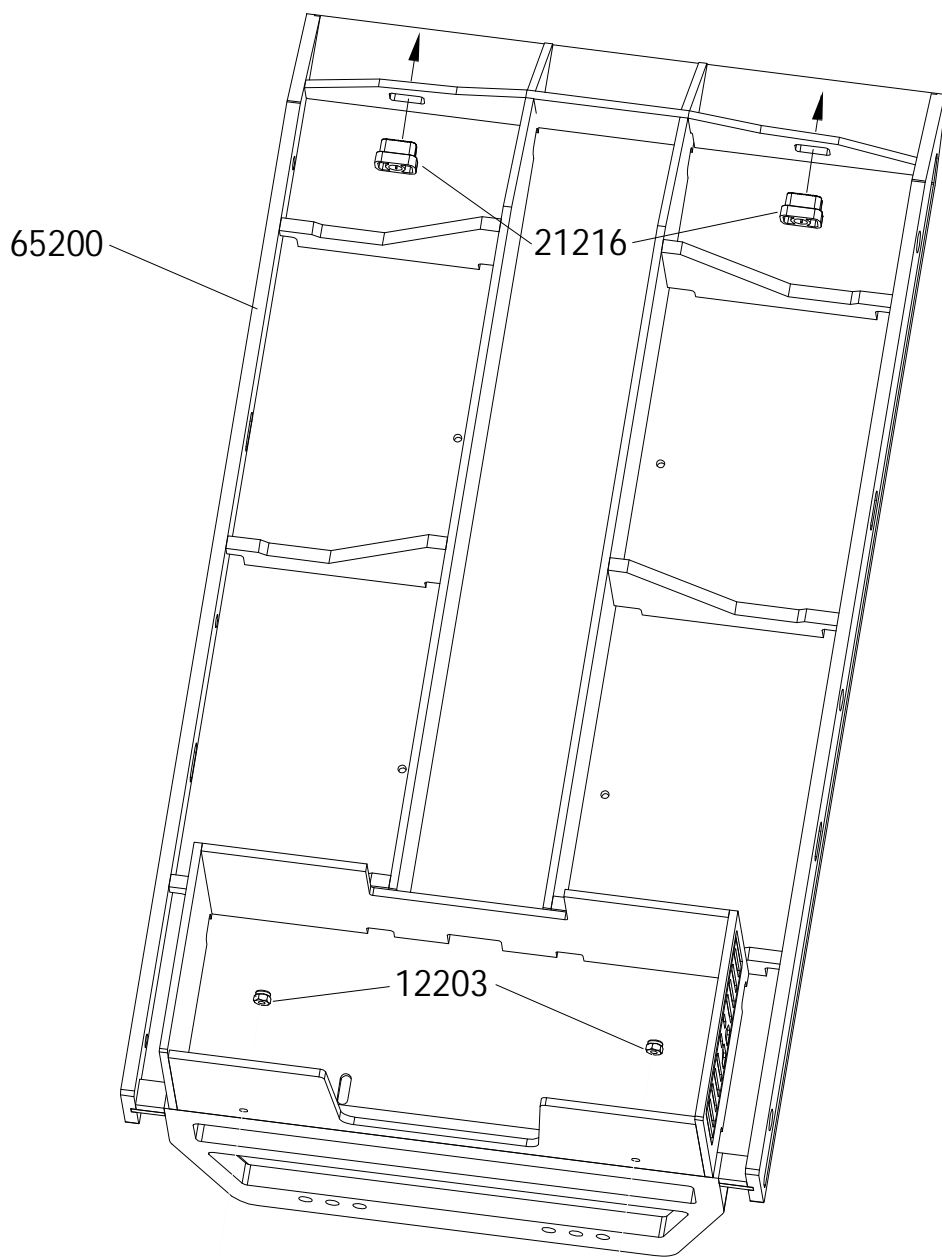
- 11206  M3x8 X1
- 14102   $\varnothing 3 \times \varnothing 7 \times 0.5$  X1
- 11401  M3x4 X1
- 41688   $\varnothing 1.3 \times \varnothing 1 \times 20$  X1



45

11210   
M3x16 X2



12203   
M3 X2

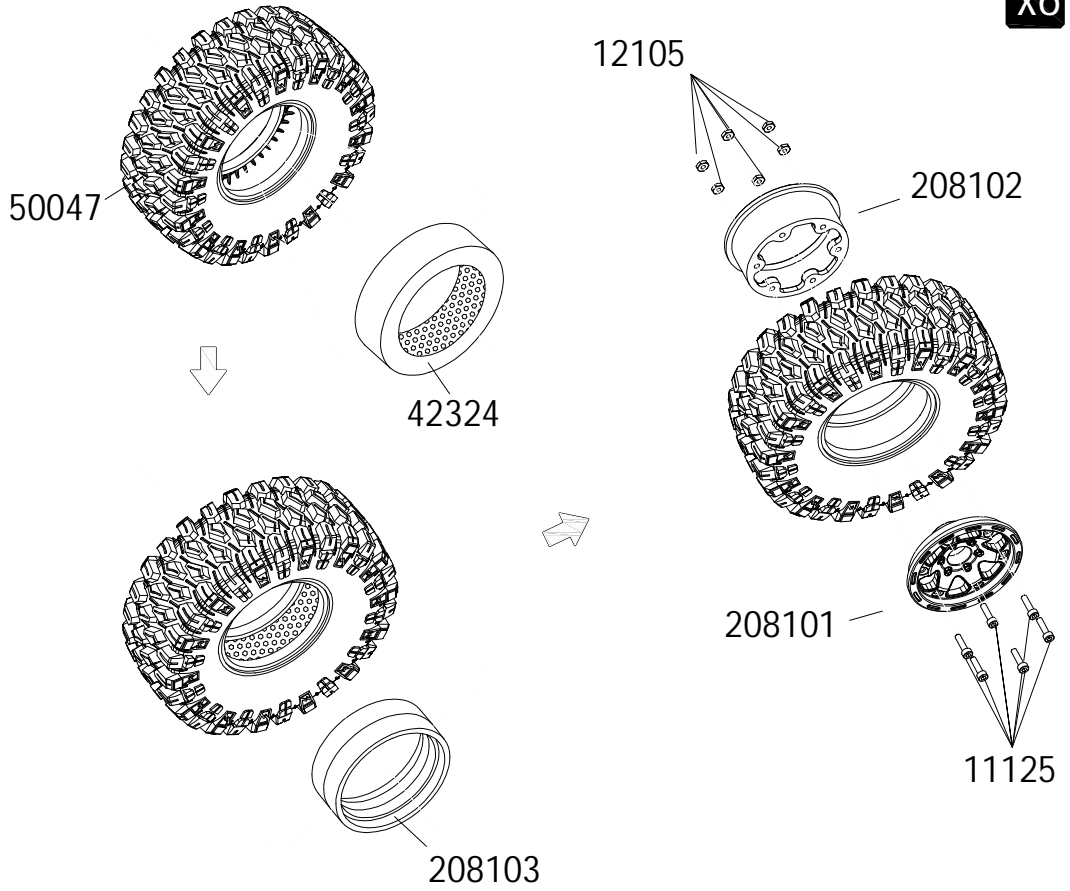


46

JT6(RTR)

x6

- 11125  M2.5x10 X36
- 12105  M2.5 X36

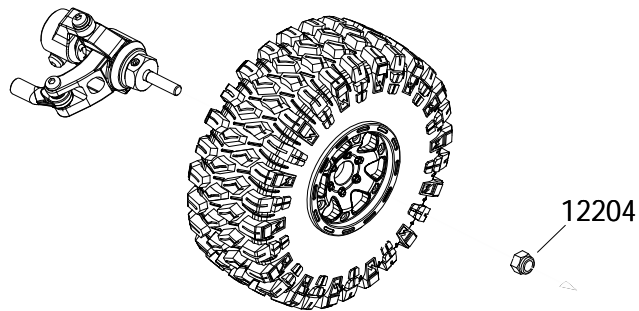


47

JT6(RTR)


x6

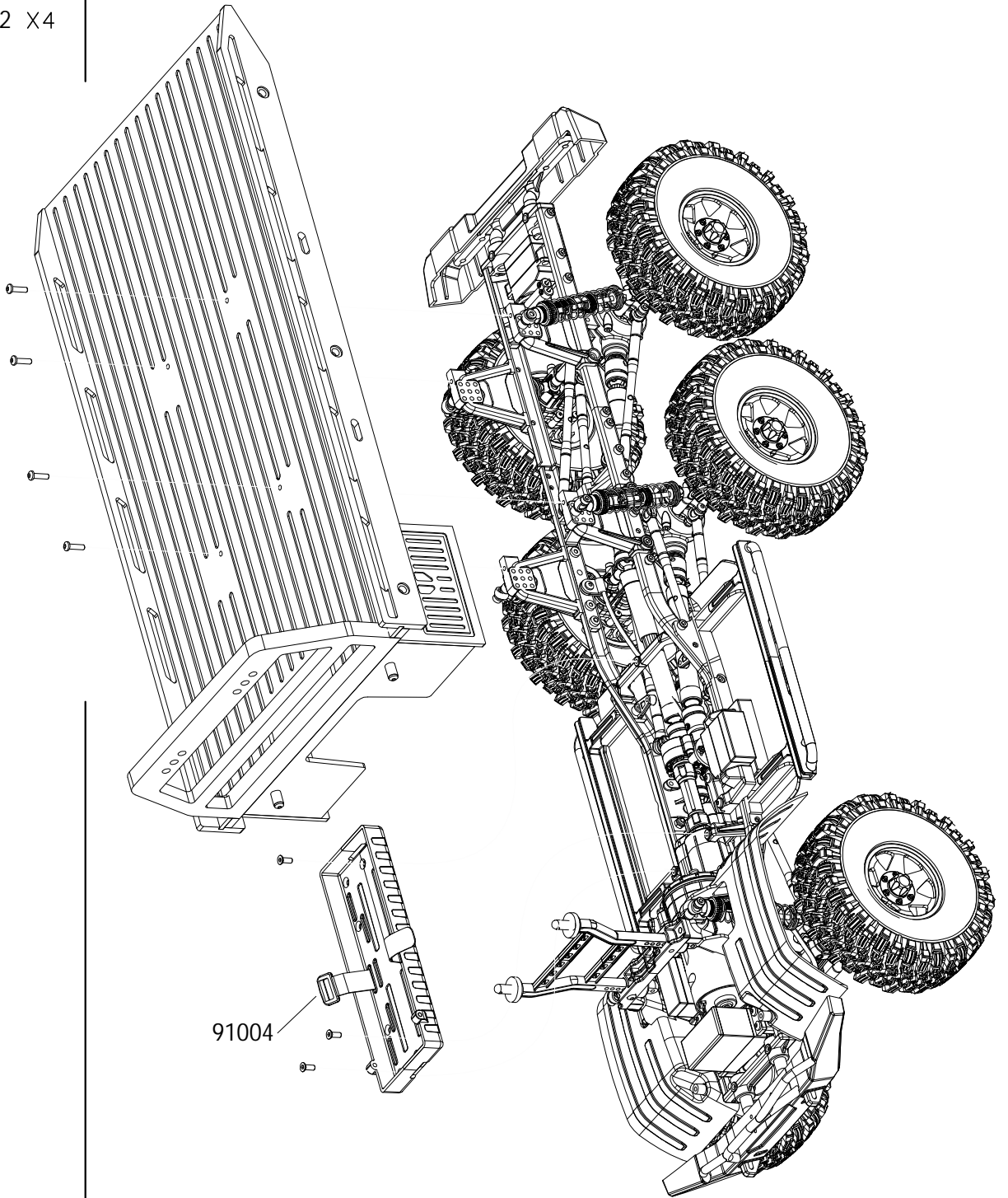
- 12204  M4 X6



48

JT6(RTR)

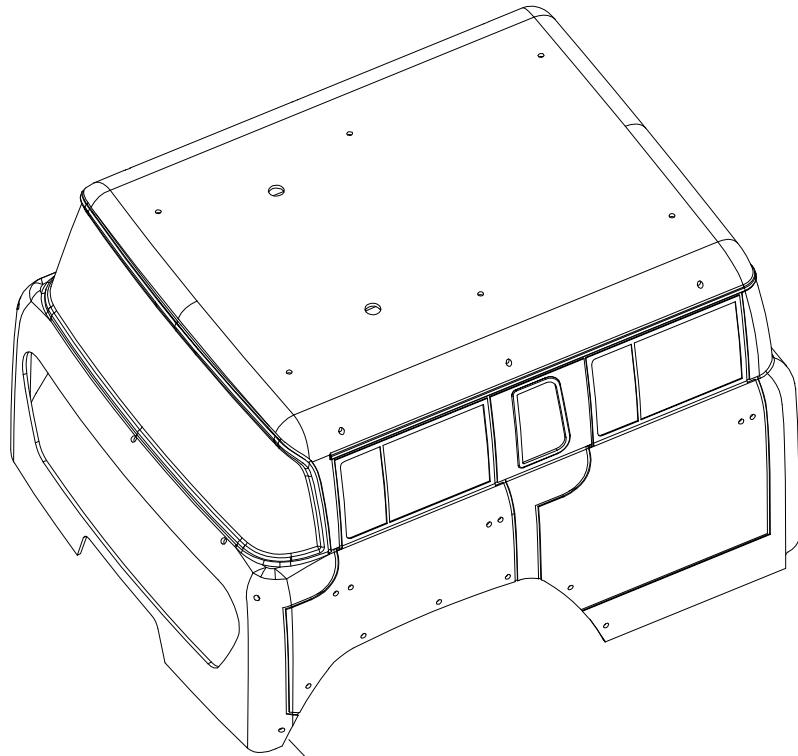
11208   
M3x12 X4





51

JT6(RTR)




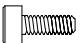
215801/215803/215805


BAG(ZA)


52

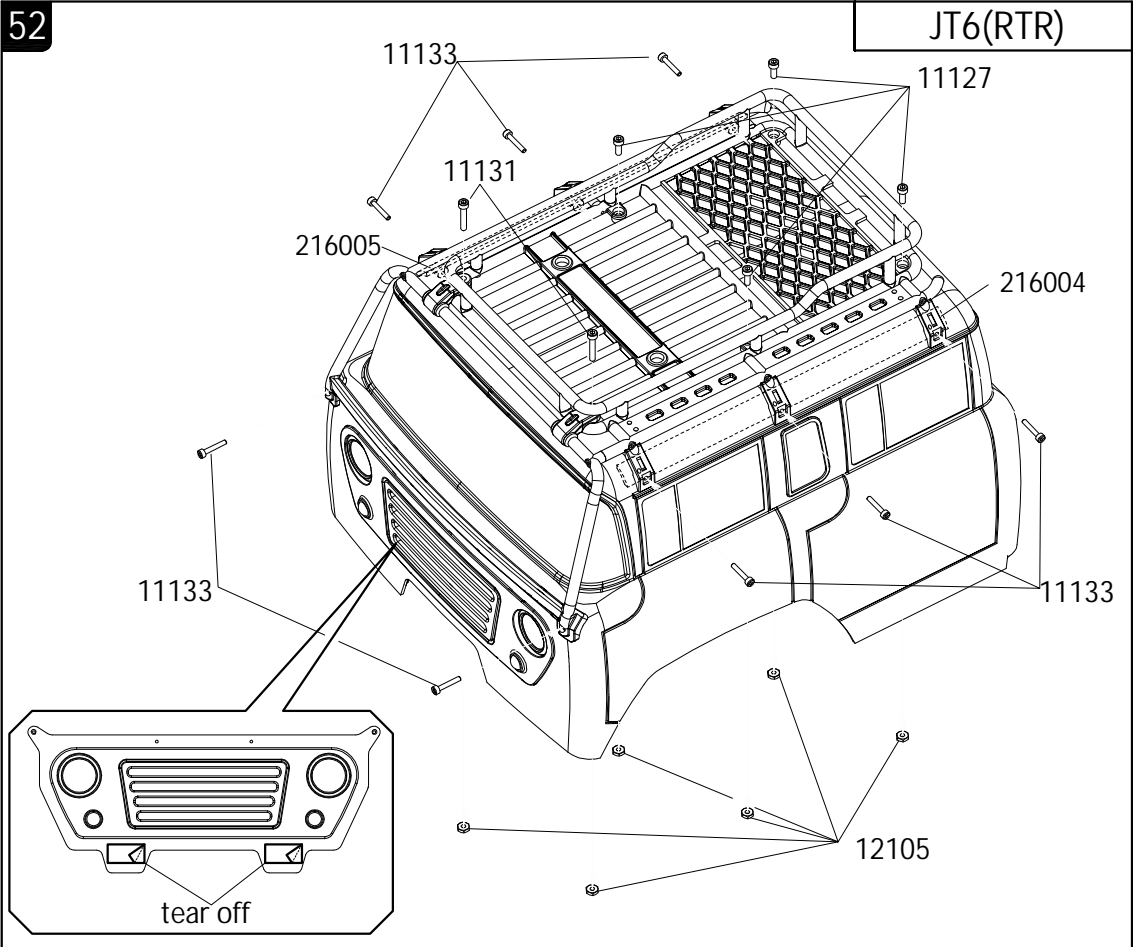
JT6(RTR)

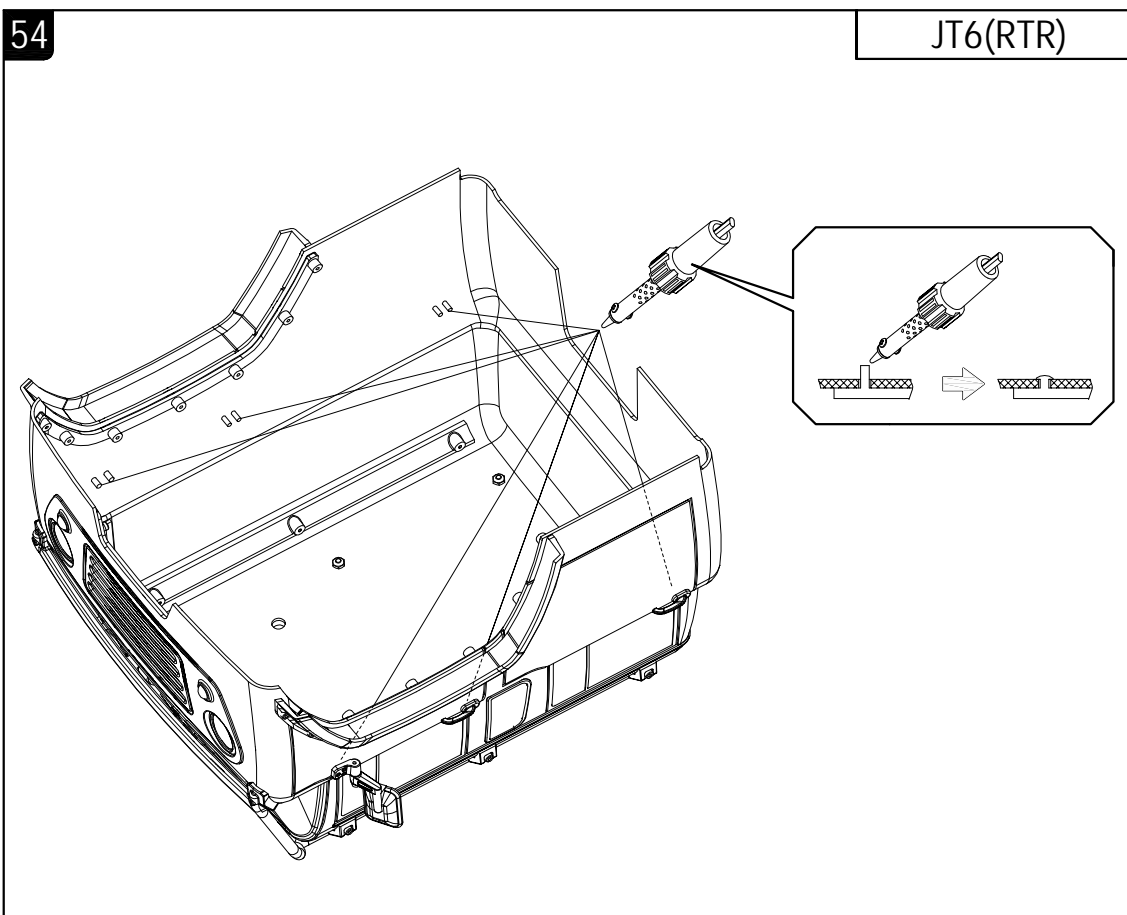
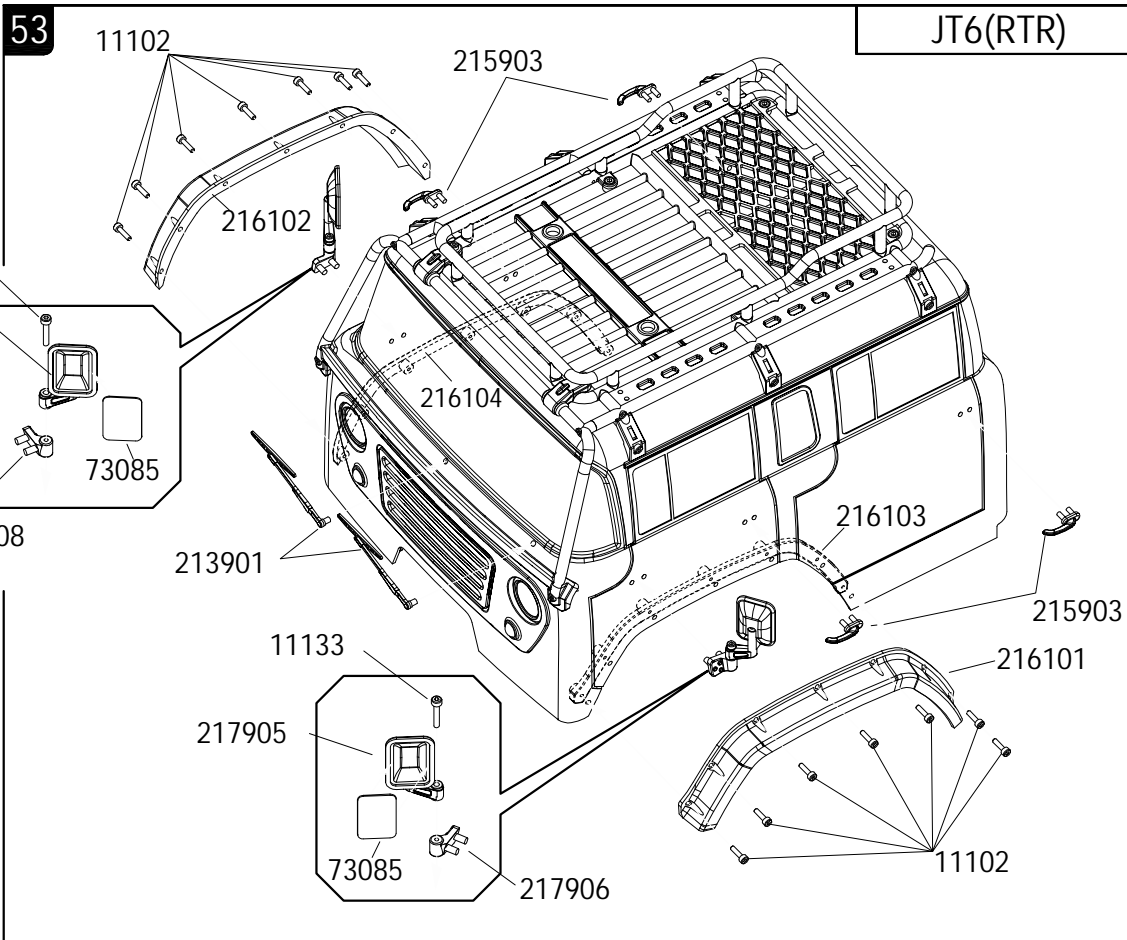
11133  M2x12 X8

11127  M2.5x7X4

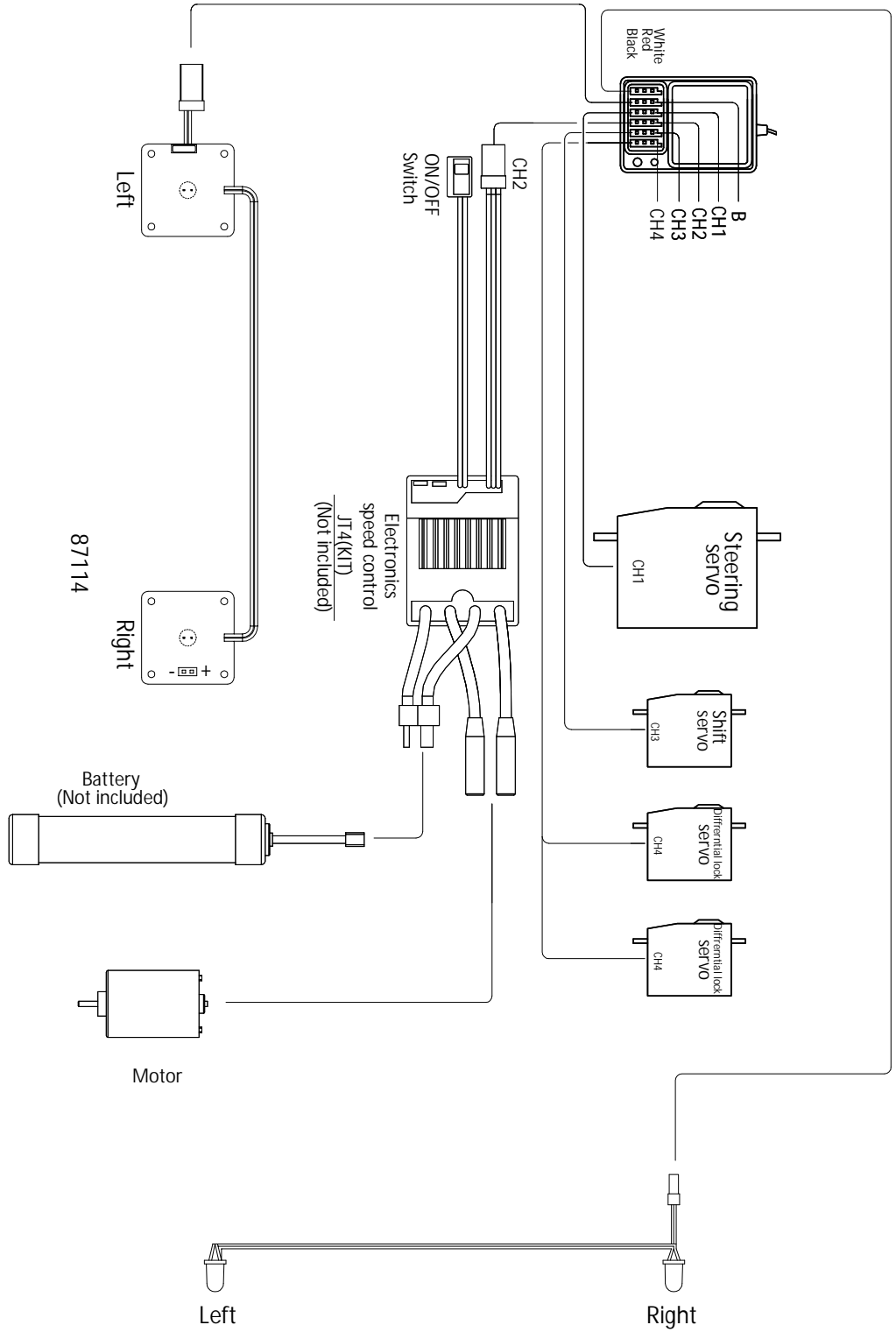
11131  M2.5x14 X2

12105  M2.5 X6

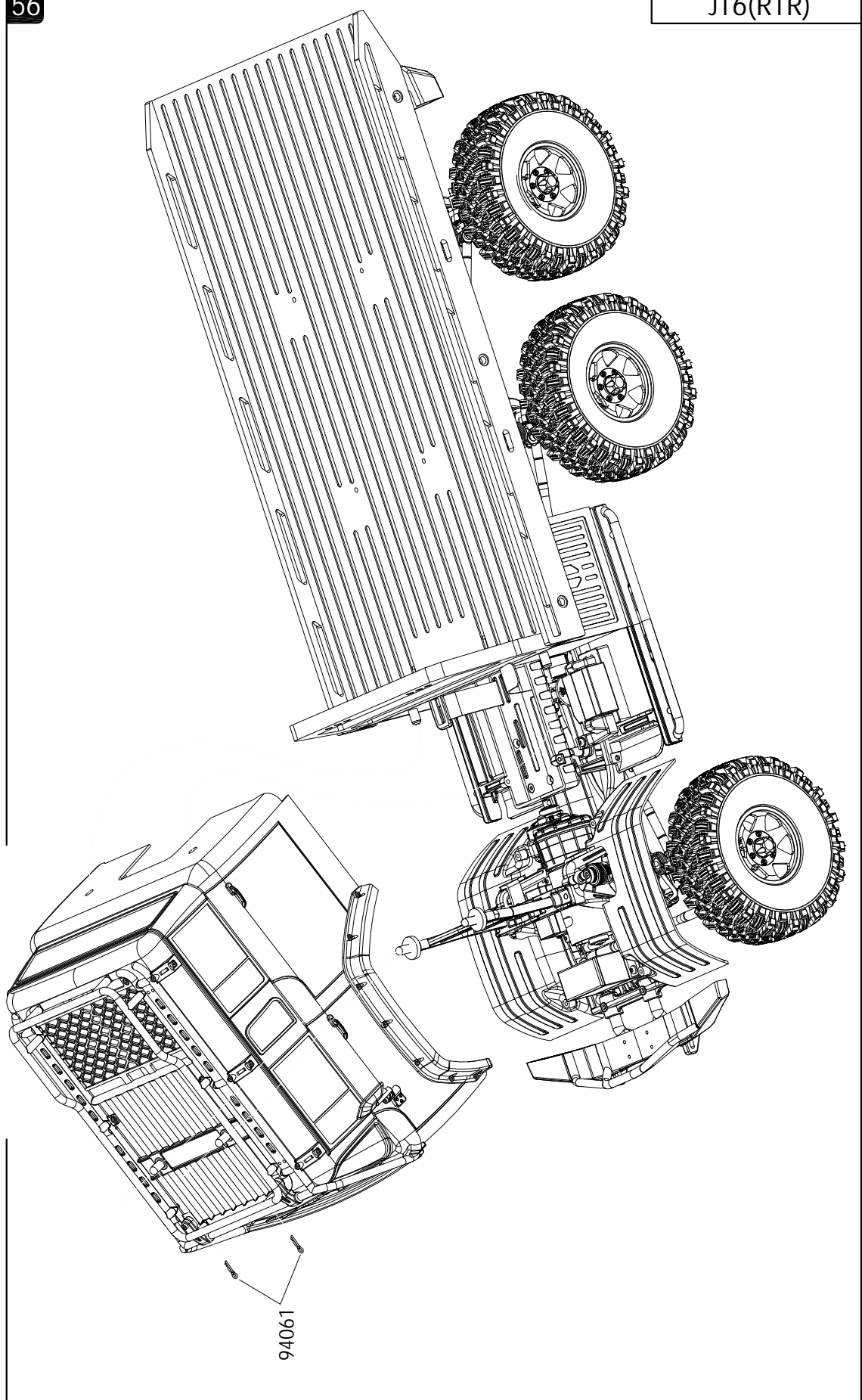








87113



  
94061 x2

94061